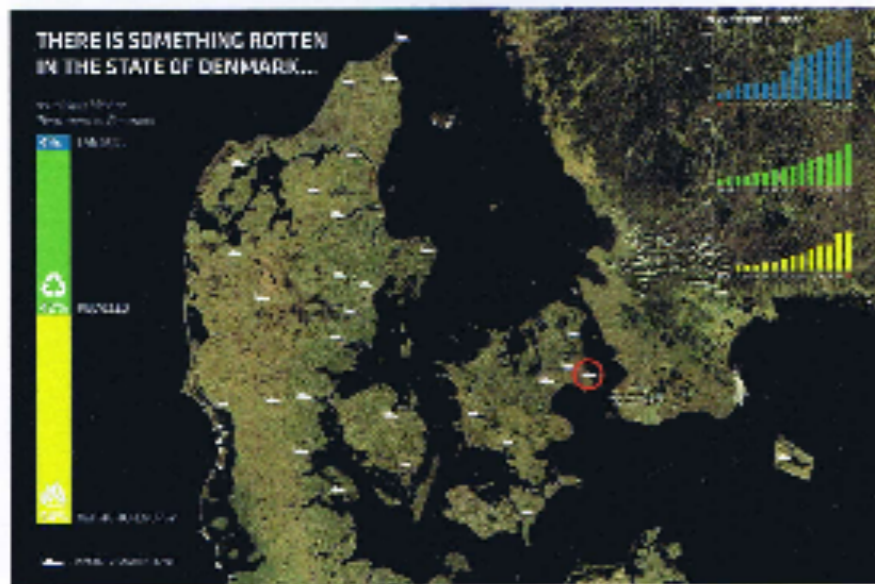
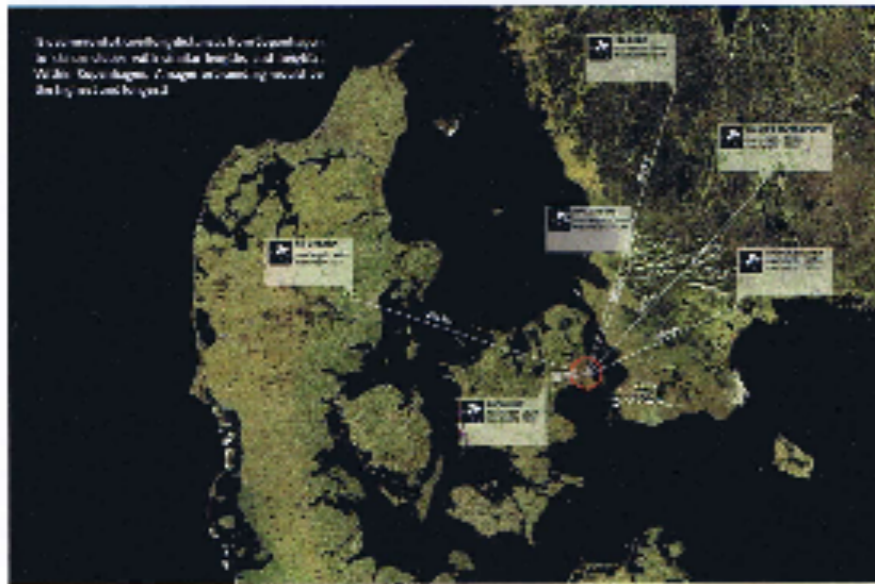


L.6 INFRAESTRUCTURA Y REDES

Amager Resource Center
Bjarke Ingels Group (BIG)

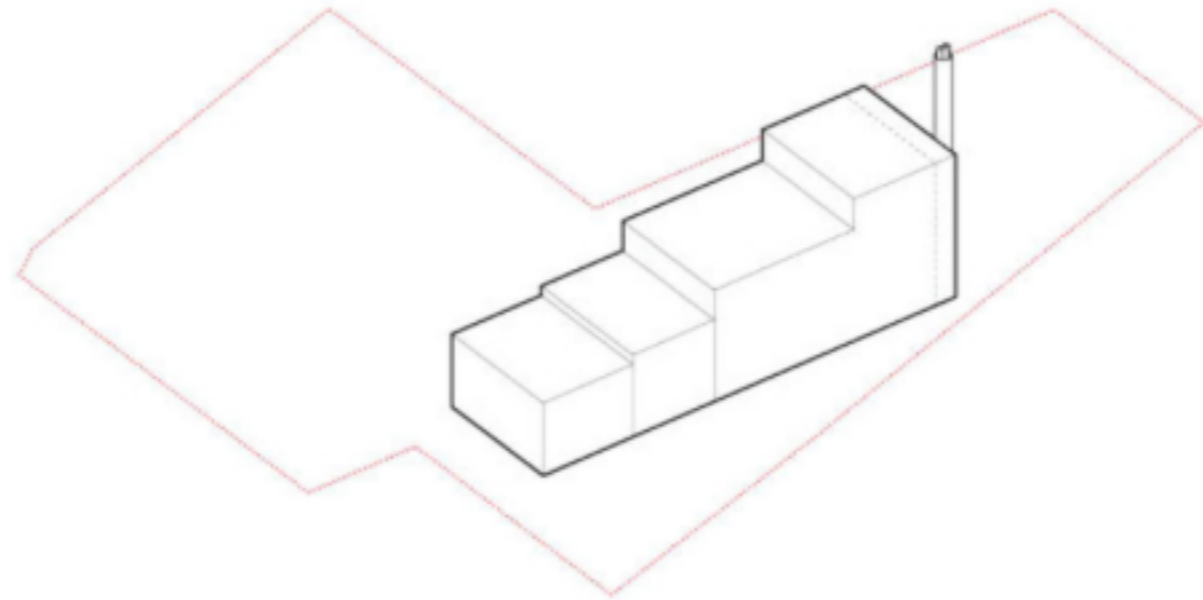


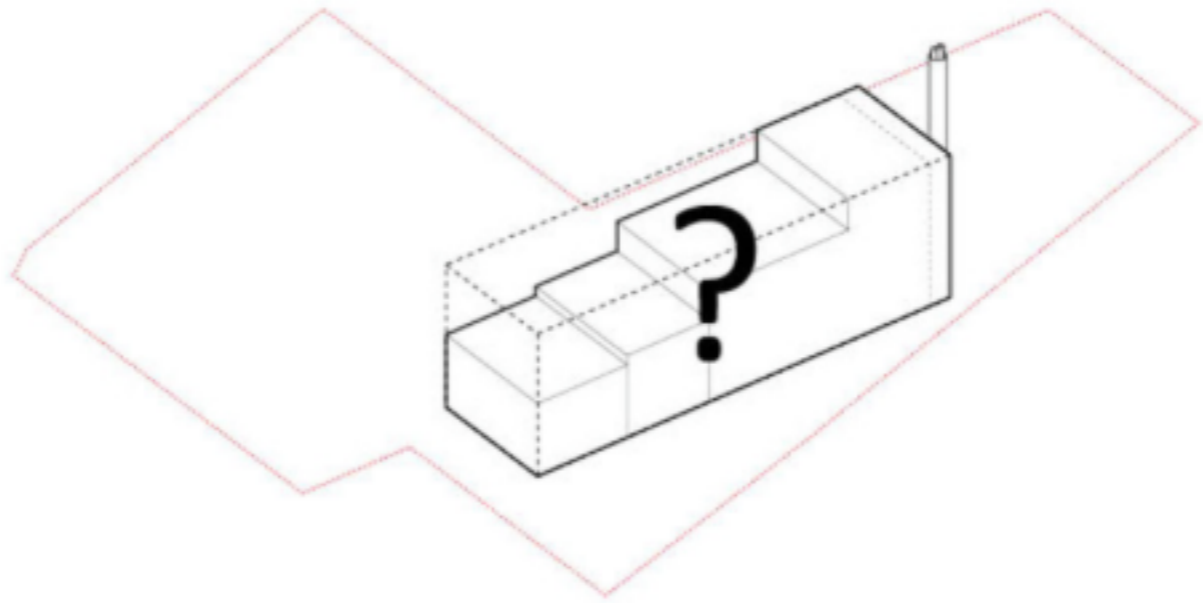


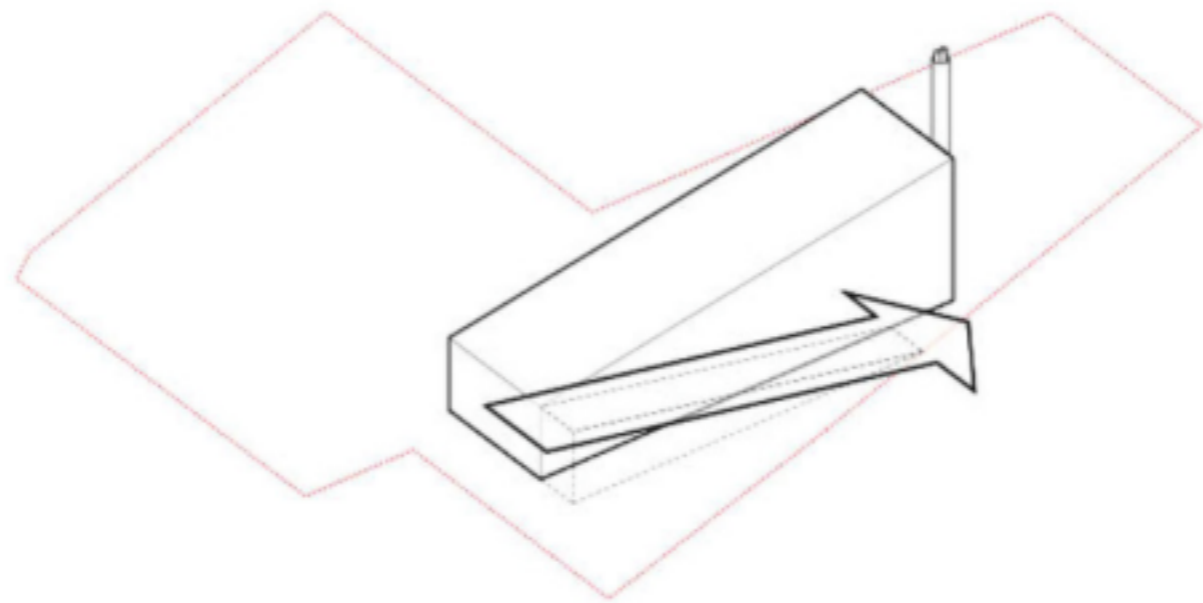




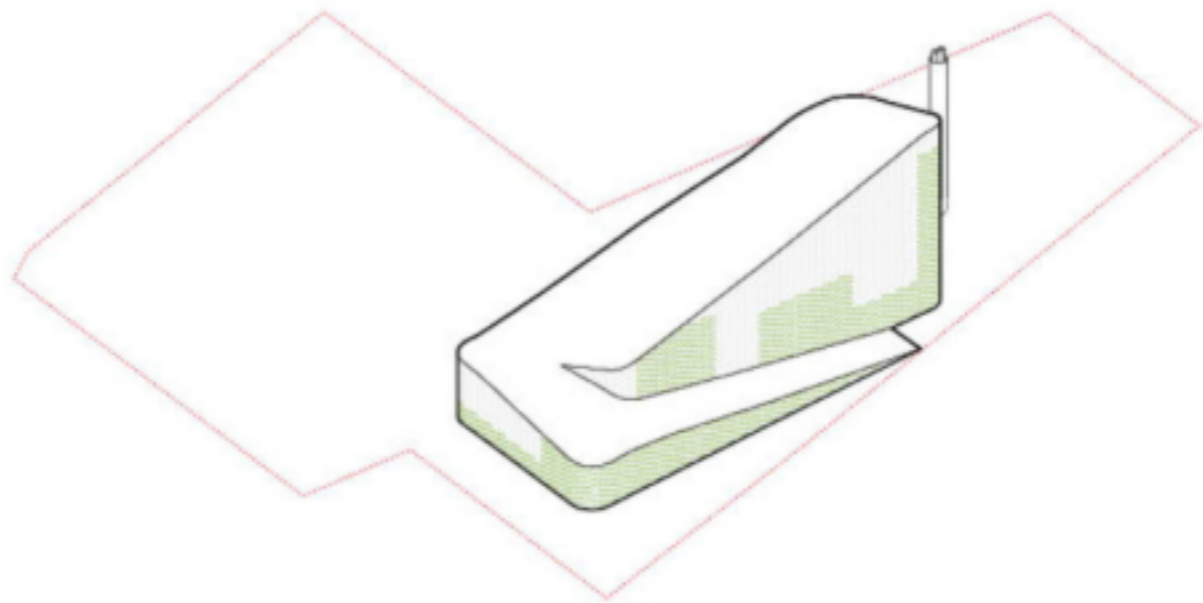


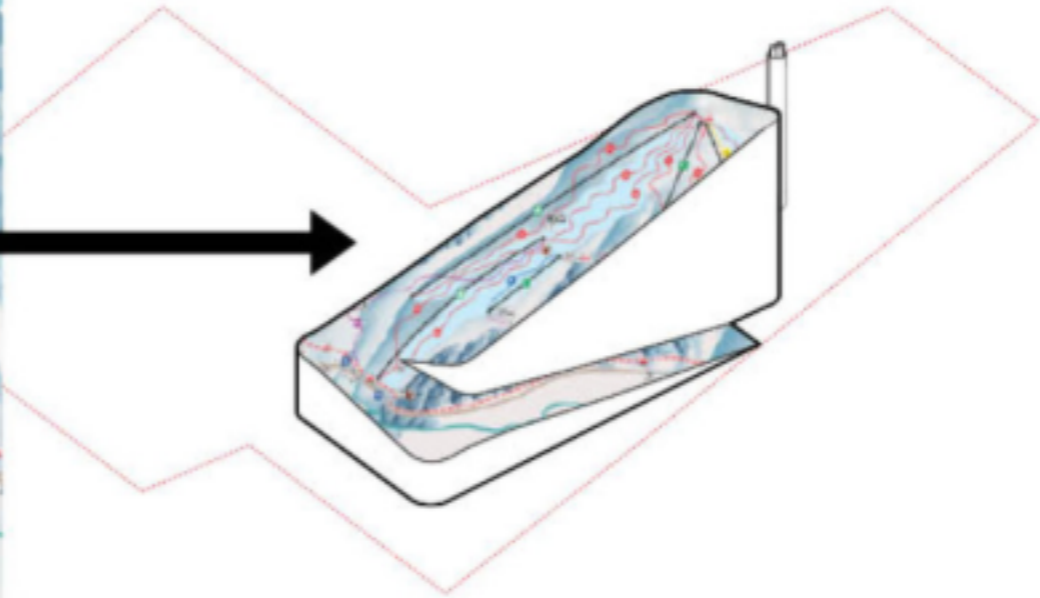
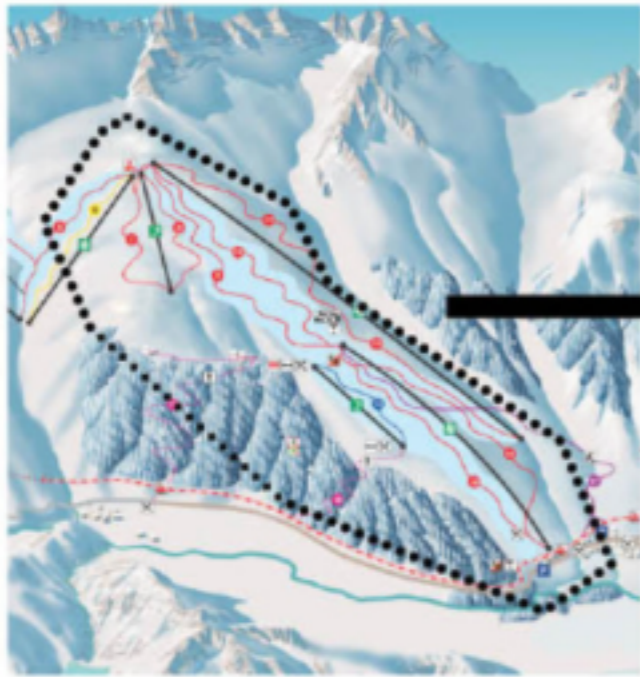


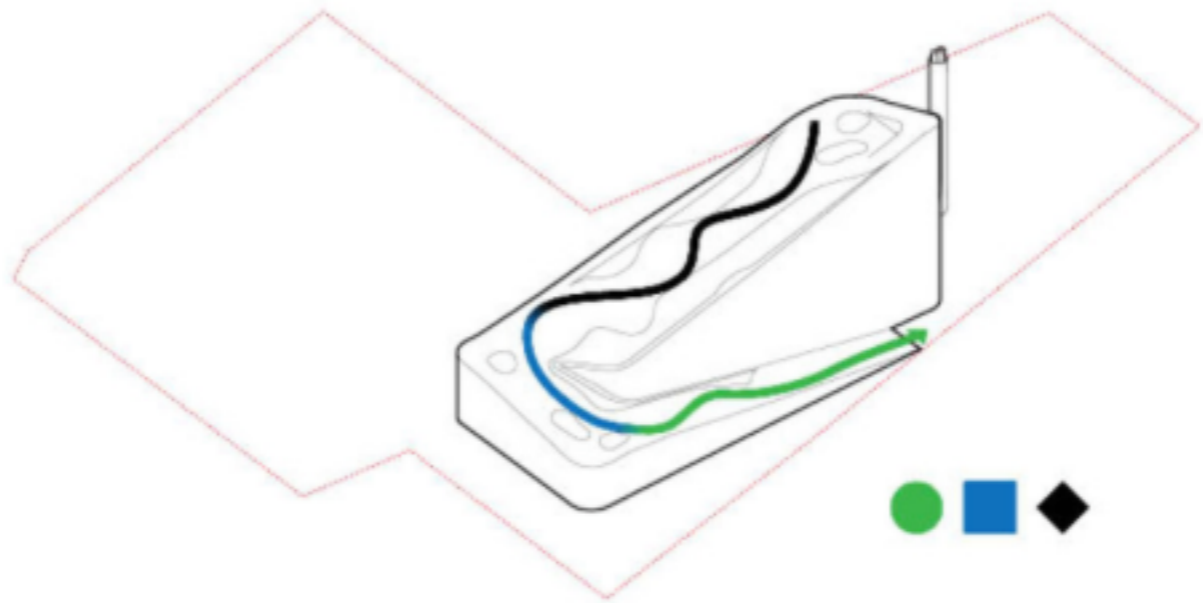


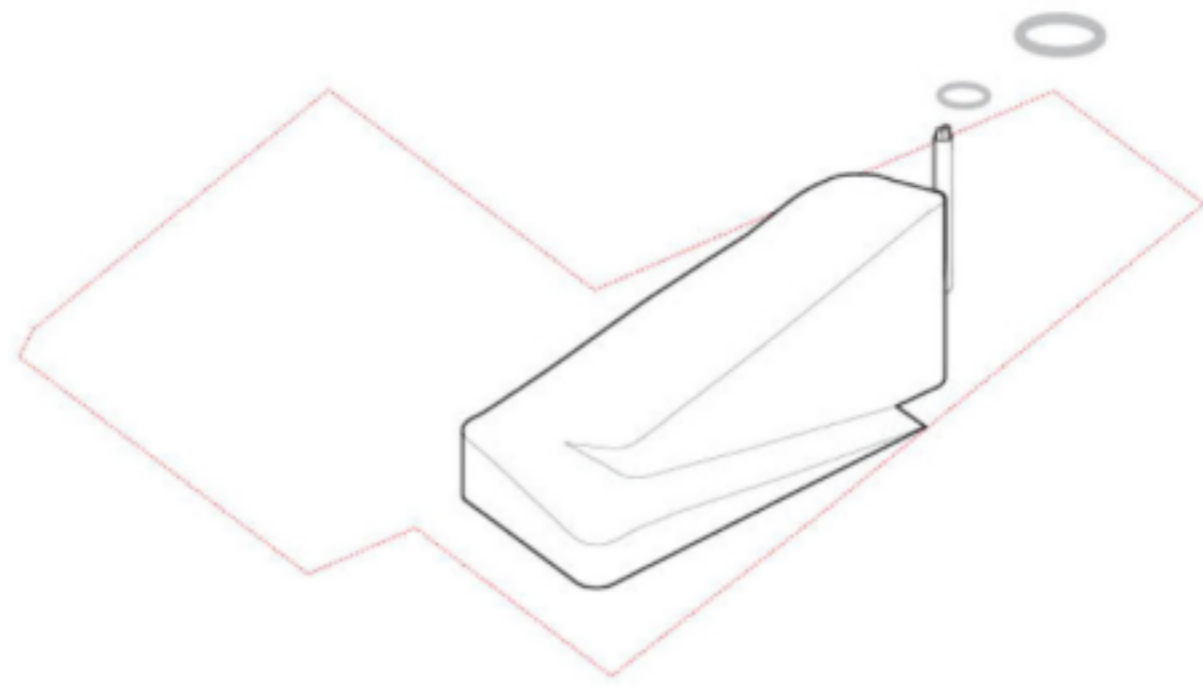






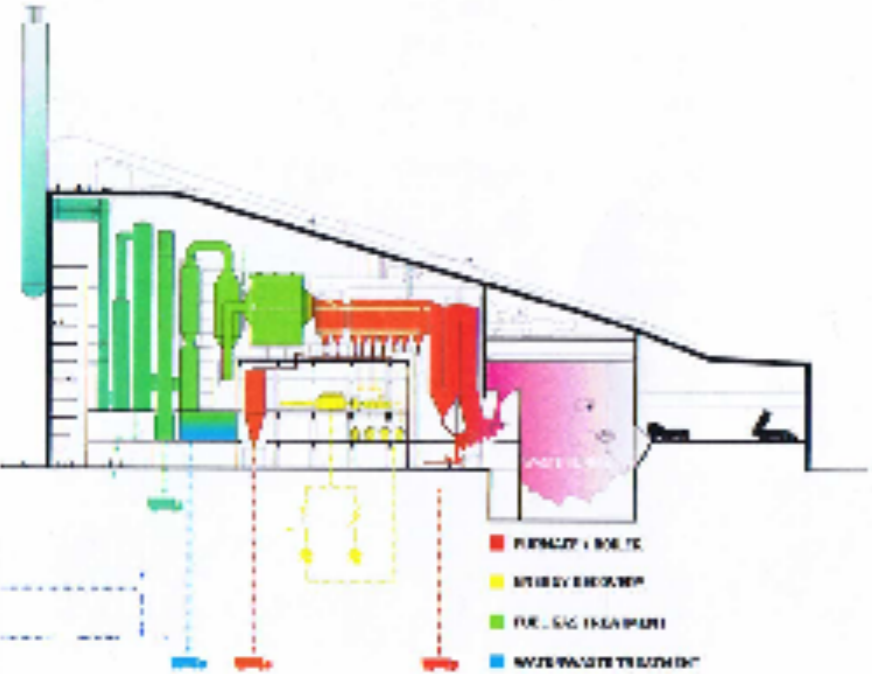




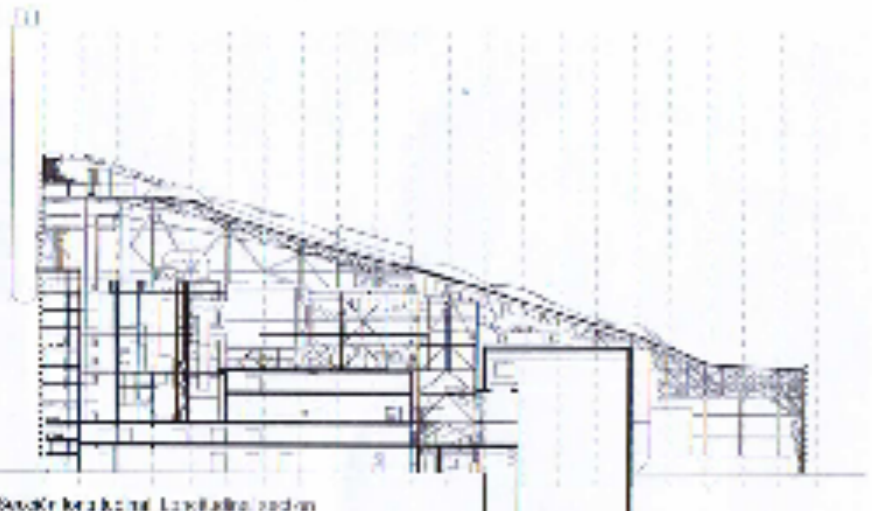






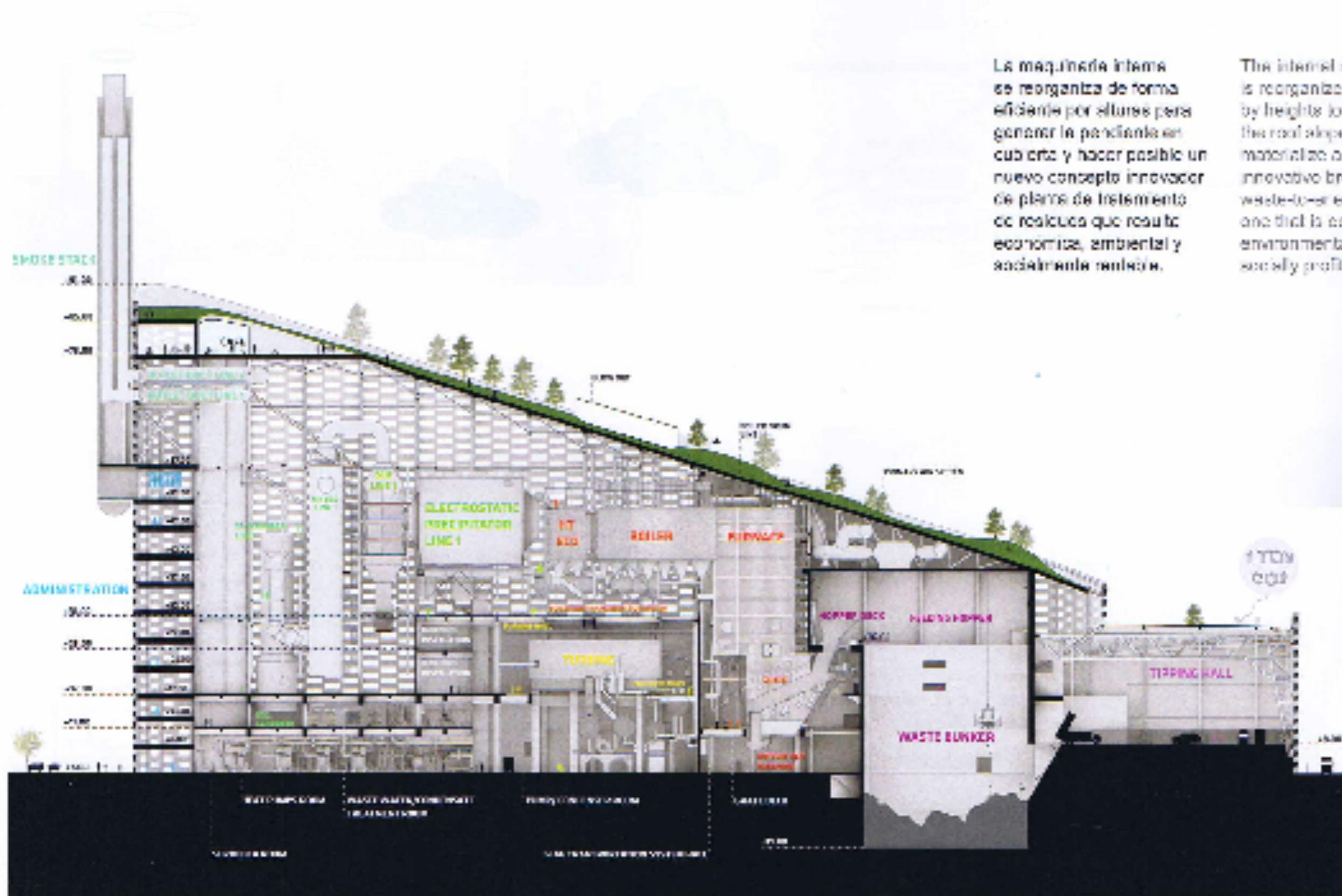


Procesamiento de residuos. Wastewater treatment



Steel structure. Longitudinal section

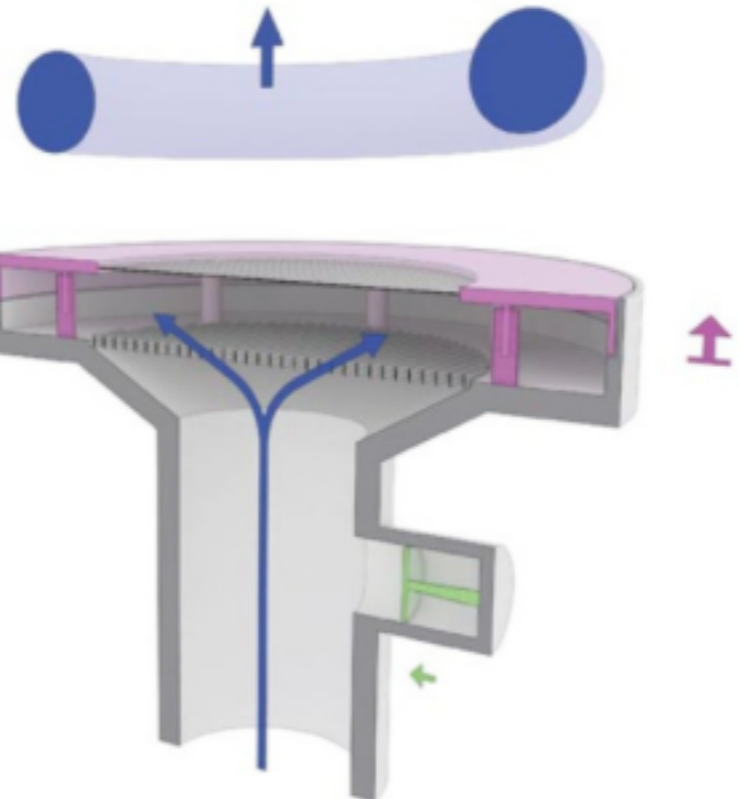
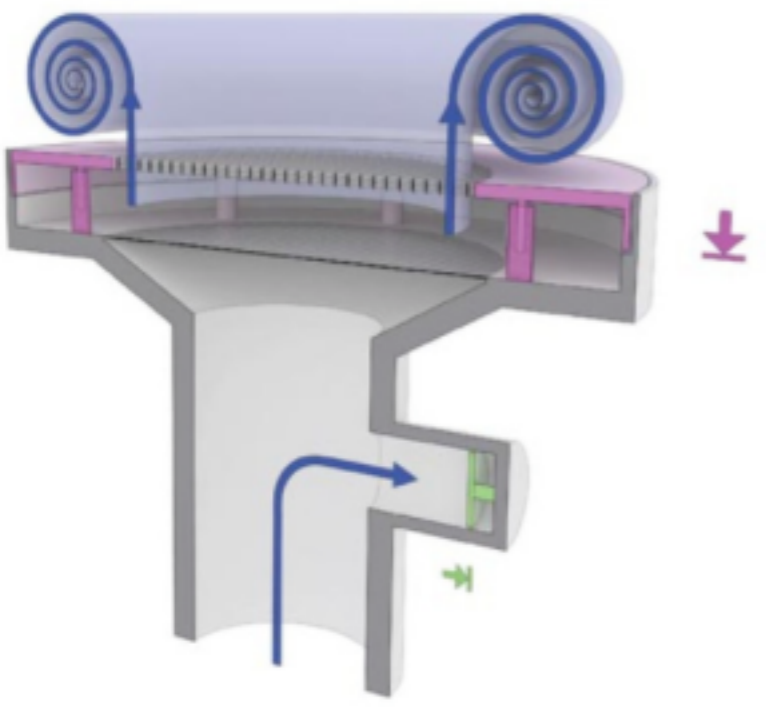
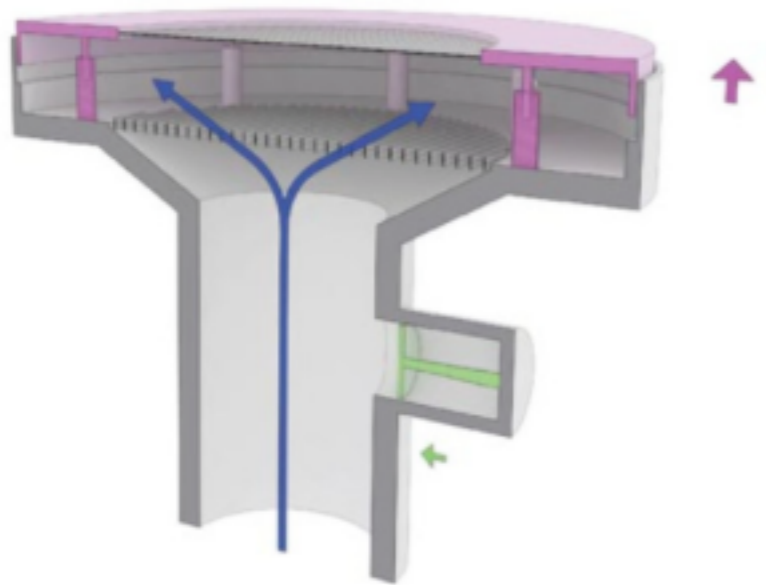


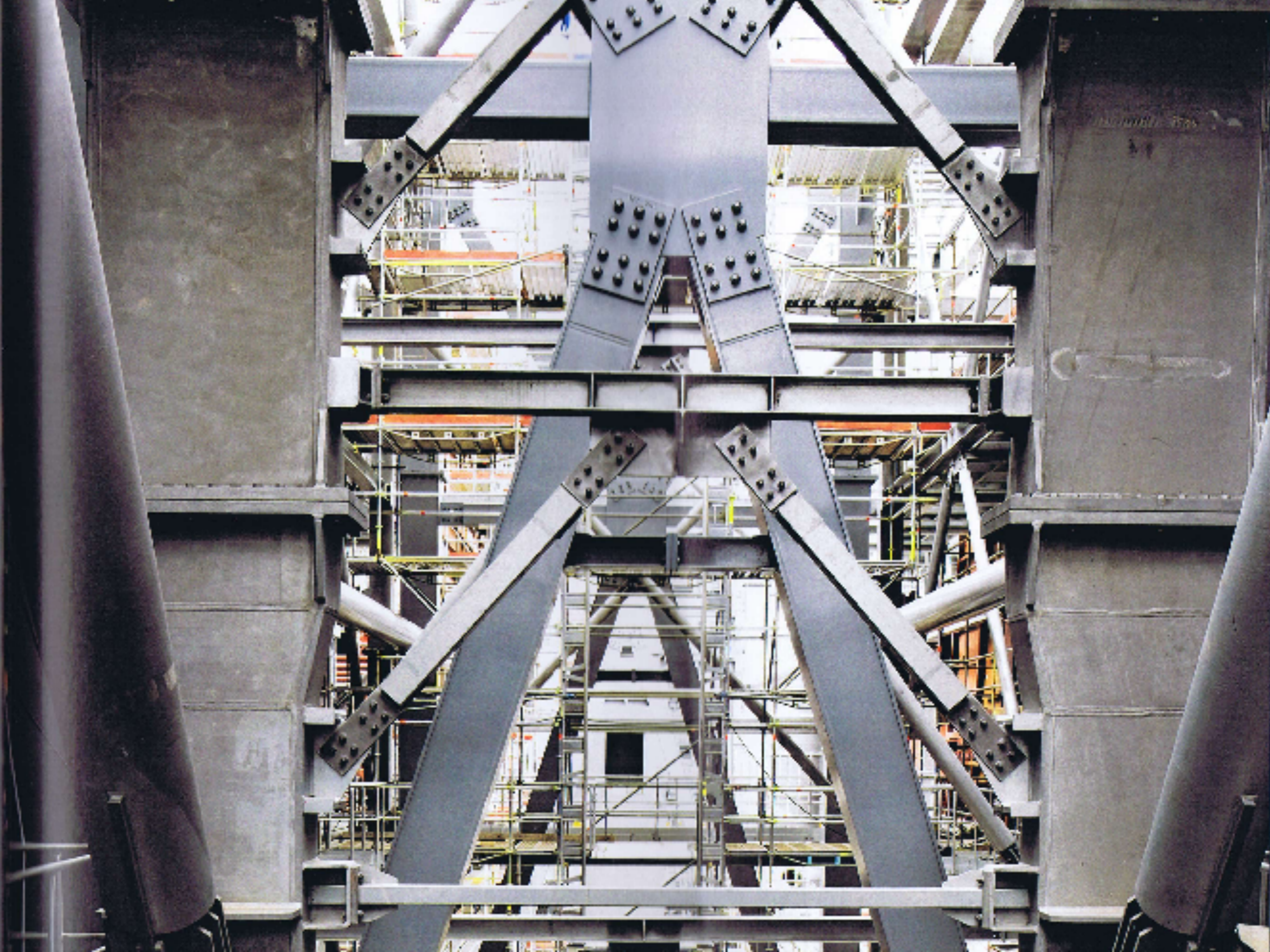


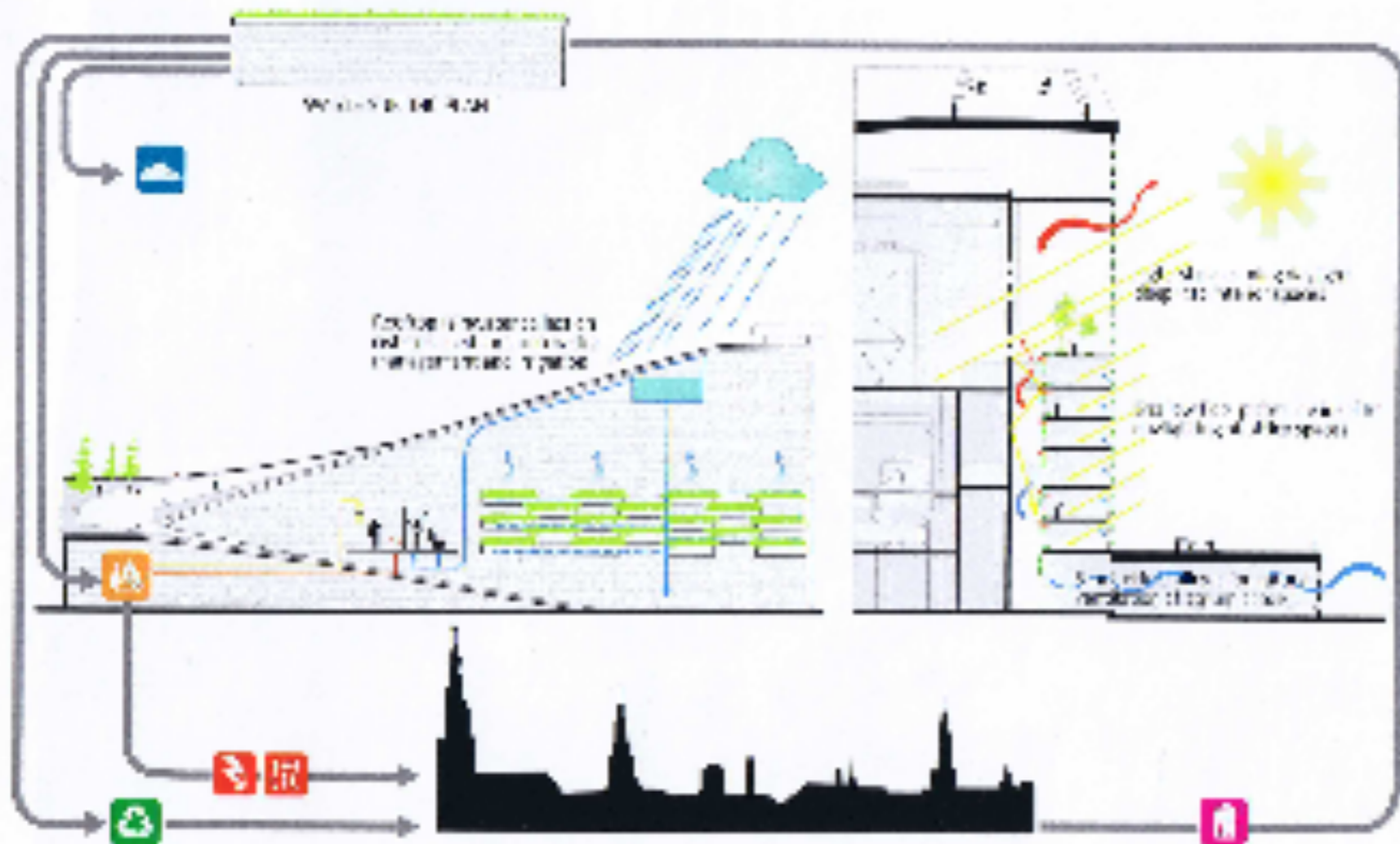
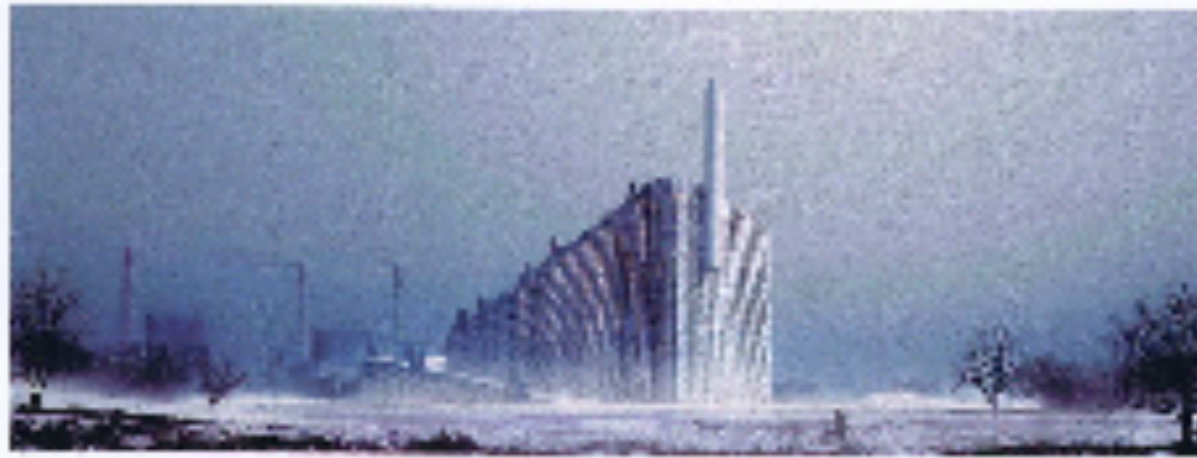
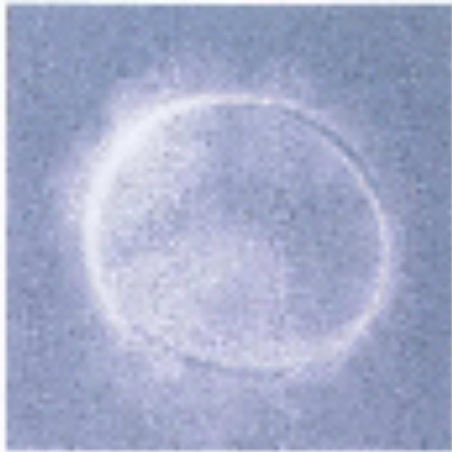
La maquinaria interna se reorganiza de forma eficiente por alturas para generar la pendiente en cubierta y hacer posible un nuevo concepto innovador de planta de tratamiento de residuos que resulta económica, ambiental y socialmente rentable.

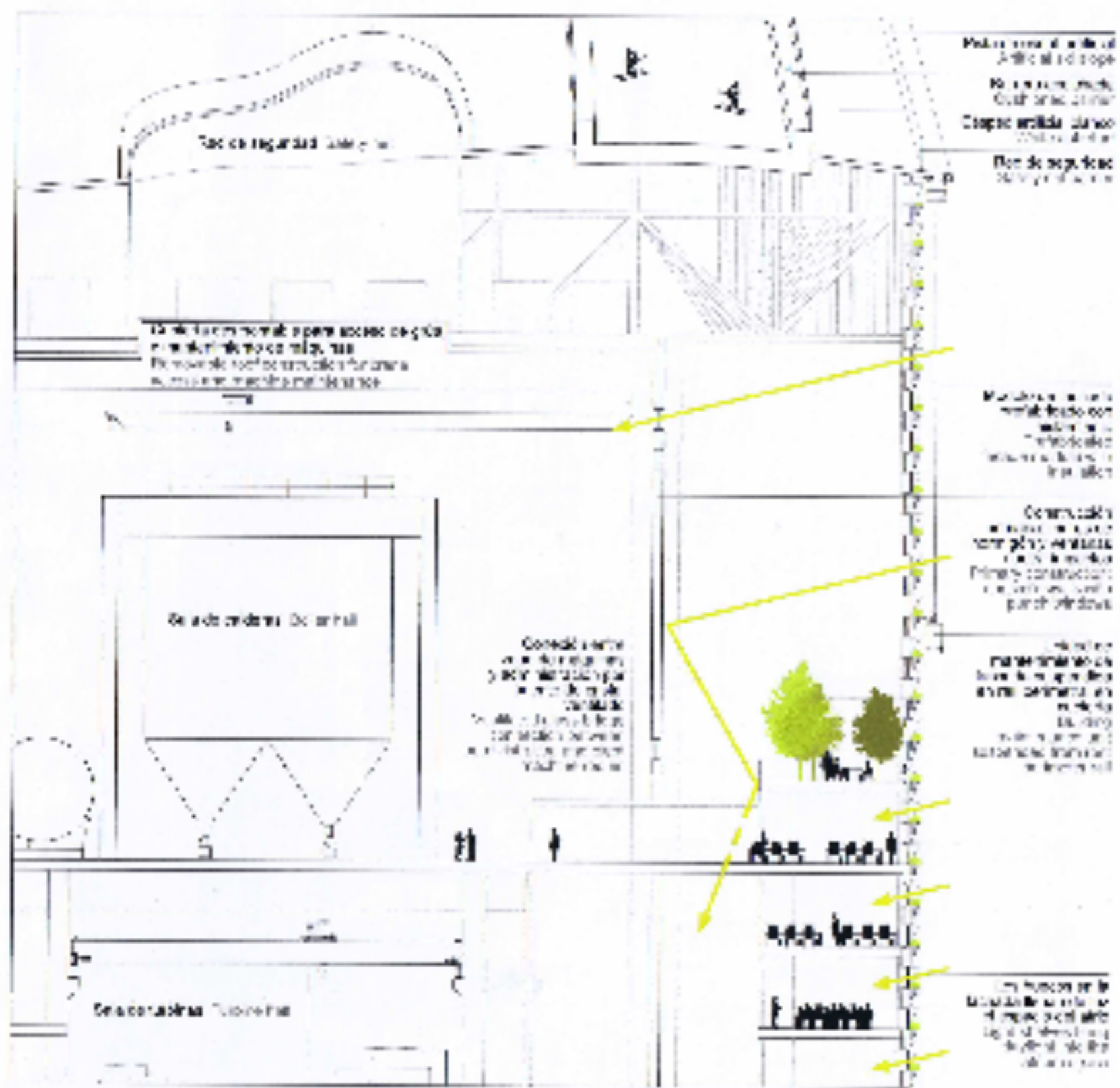
The internal is reorganized by heights to the roof slope materialize a innovative bro waste-to-energy one that is an environmental and socially profitable.

Funcionamiento del centro. The function of the Resource Center











BIBLIOGRAFIA:

http://www.architectmagazine.com/awards/p-a-awards/amager-resource-center-designed-by-bjarke-ingels-group-big_o

<http://www.big.dk/#projects-arc>

<http://www.archdaily.com/339893/big-waste-to-energy-plant-breaks-ground-breaks-schemas>