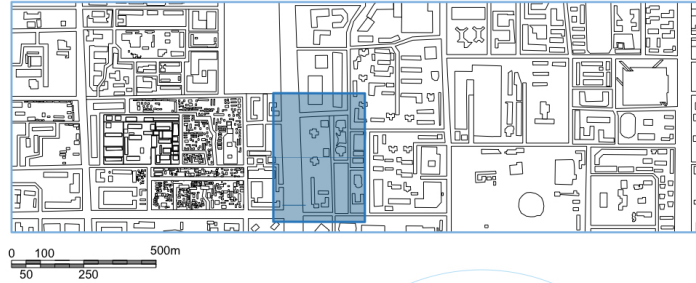
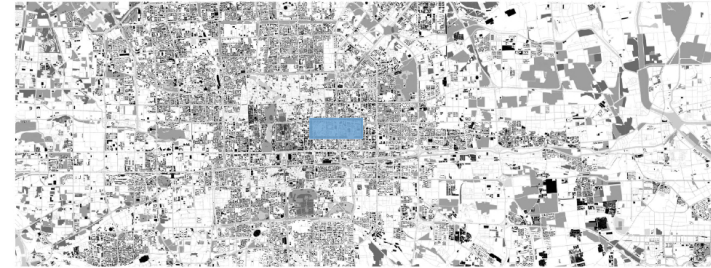
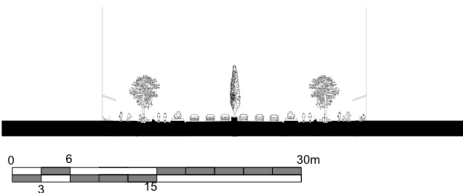


BEIJING



As Beijing faces the challenge of accommodating a rapidly growing population and evolving urban dynamics, I propose a visionary transformation of one of the city's historic streets. This project reimagines the urban fabric by revitalizing ancient canals and integrating them into the modern cityscape as vibrant recreational and cultural spaces. This initiative seeks to blend historical preservation with contemporary urban living, ensuring sustainability, accessibility, and enriched quality of life for all citizens.

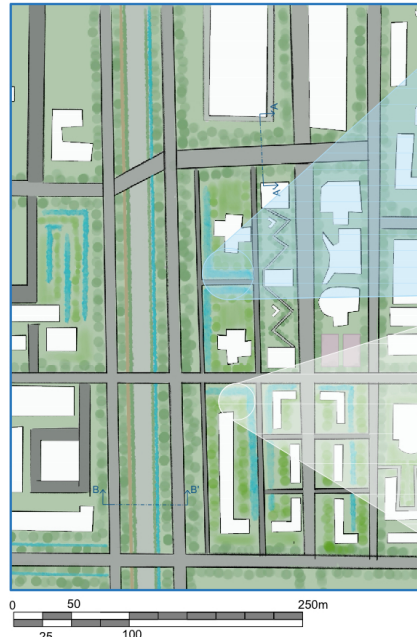
SECCION - AA'



SECCION - BB'



FOCUSED WINDOW



Environmental and Social Resilience:

Incorporate natural water filtration systems to ensure clean, sustainable water features while prioritizing accessibility with wheelchair-friendly paths and inclusive programming for all.

Sustainable Urban Mobility:

Integrate cycling paths and pedestrian walkways along the canal to reduce car usage and promote eco-friendly transportation options.

Fostering Community Interactions:

Develop cultural spaces for public events, markets, and performances to foster community engagement and celebrate local traditions.

Enhancing Public Spaces:

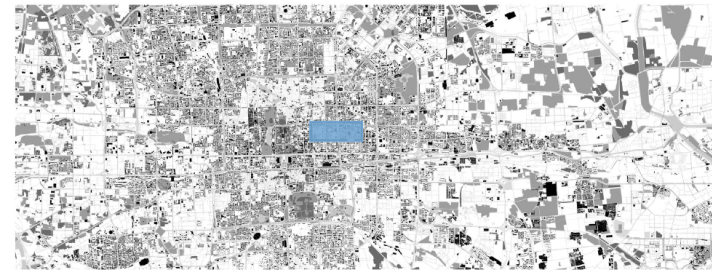
Surround the revitalized canal with shaded green areas, pedestrian zones, and multifunctional plazas to encourage vibrant social interactions and relaxation.

Reactivation of Ancient Canals:

Restore long-buried canals and transform them into green linear parks and dynamic water features that bring life back to the urban landscape.



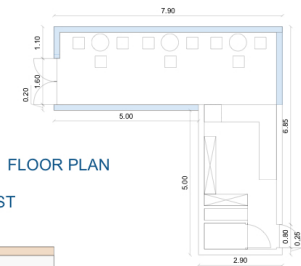
BEIJING



As Beijing faces the challenge of accommodating a rapidly growing population and evolving urban dynamics, we propose a visionary transformation of one of the city's historic streets. This project reimagines the urban fabric by revitalizing ancient canals and integrating them into the modern cityscape as vibrant recreational and cultural spaces. This initiative seeks to blend historical preservation with contemporary urban living, ensuring sustainability, accessibility, and enriched quality of life for all citizens.

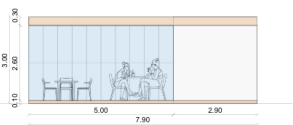
PAVILLON - CAFETERIA

Between office buildings, two compact pavilions serve as relaxation zones for employees and passersby. With a lightweight frame, glass panels, and wooden accents, they blend modern design with a welcoming feel. One pavilion houses a small café with seating and a bar serving beverages.

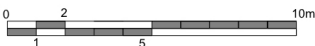
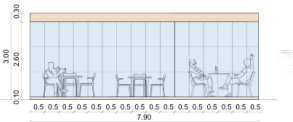


FLOOR PLAN

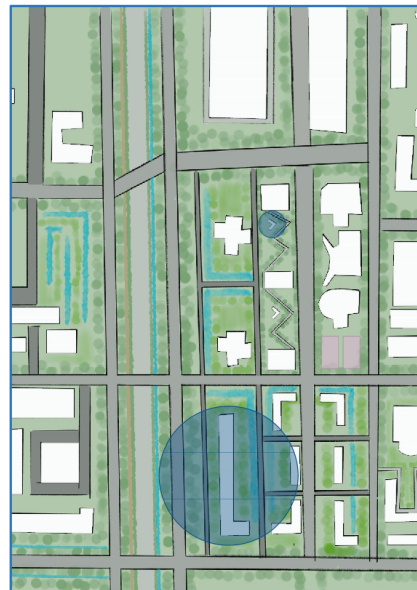
ELEVATION SOUTH- WEST



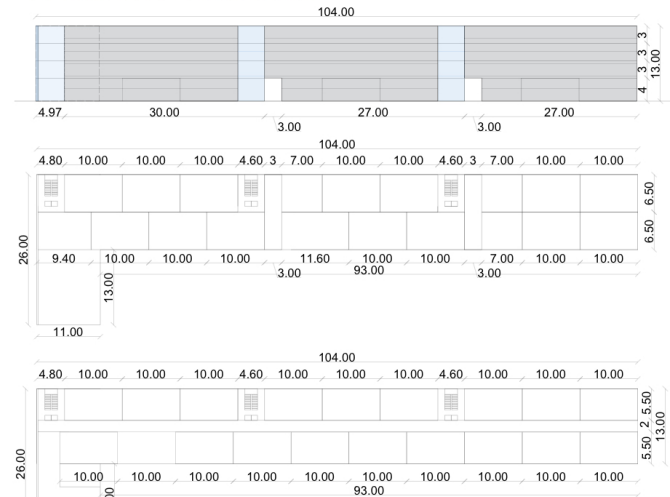
ELEVATION NORTH- EAST



FOCUSED WINDOW



RESIDENTIAL BUILDING



The residential building is designed to accommodate a growing population, with ground-floor spaces dedicated to shops and services meeting residents' daily needs. The upper floors serve as residential zones, while the ground level features a 3-meter-wide passageway, extending the street and improving pedestrian connectivity. Each residential floor includes a designated sector with unique amenities tailored to enhance the living experience of its residents: supermarket, gym, etc.



