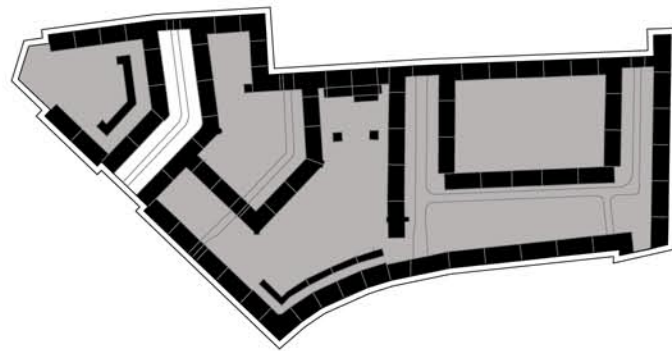
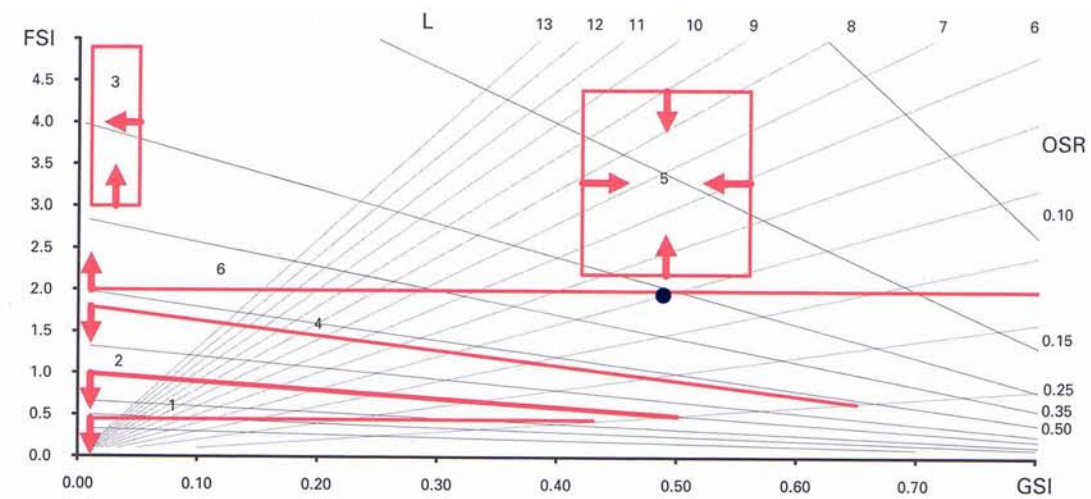


Barrio de Múnich: Borstei



A=6,2 ha
 FSI=1,95
 GSI=0,49
 OSR=0,25
 L=4
 N=0,019
 w=105,2m
 b=3,2m
 T=6%

Clase: mid-rise
block type



Doctrines which have been argued for through history, polemically translated into density thresholds in the Spacemate.
 1 Unwin (1912)
 2 Hoenig (1920s)
 3 le Corbusier (1920s)
 4 Gropius (1930)
 5 Jacobs (1961)
 6 Lozano (1990)