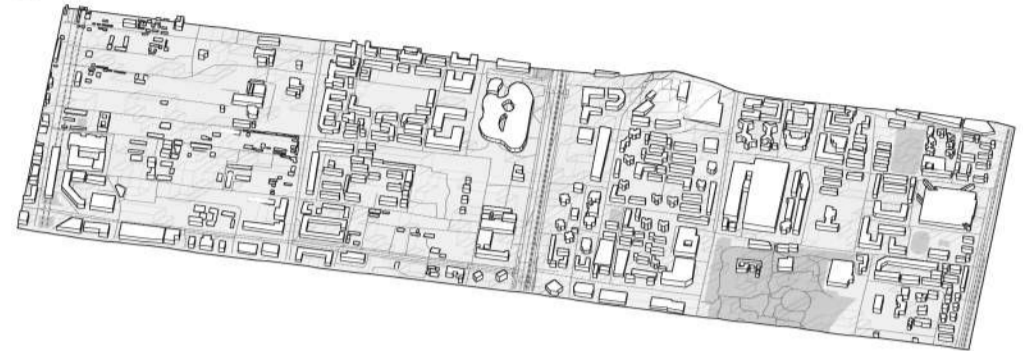


TODAY'S PROBLEM AROUND RESIDENCIAL AREAS:

Today, Beijing face several challenges that impact their functionality, affordability, and over livability. These issues stem from rapid urbanization, high population density, and the city's unique mix of historical and modern developments. Many residential areas lack sufficient green spaces, negatively impacting arii quality and microclimate. One of the major issues with residential spaces in Beijing is also lack of shared communal spaces.

1:1000 0 10 20 30 40 50 m



NEW PROPOSAL

The urban design project, is a residential space that combines innovative approaches to architecture, ecology, and sustainable development. This project addresses contemporary urban challenges such as population density, climate change, and the need for resident-friendly environments.

REFERENCES: GREEN GROWTH-RING IN GOTHENBURG

This proposal combining 900 residential units with public spaces like a library, cultural center and recreational areas. The plan prioritizes sustainable development, integrating green spaces and minimizing traffic impact for a seamless connection with Hovas I.

WATER CANALS

HIGHER DENSITY

MAIN PROPOSALS:

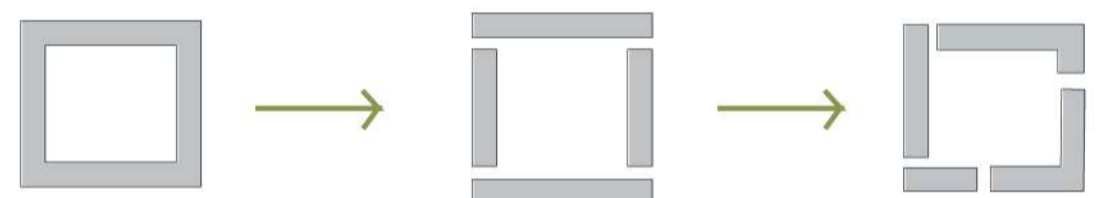
SUSTAINABLE MOBILITY

SHARED GREEN SPACES

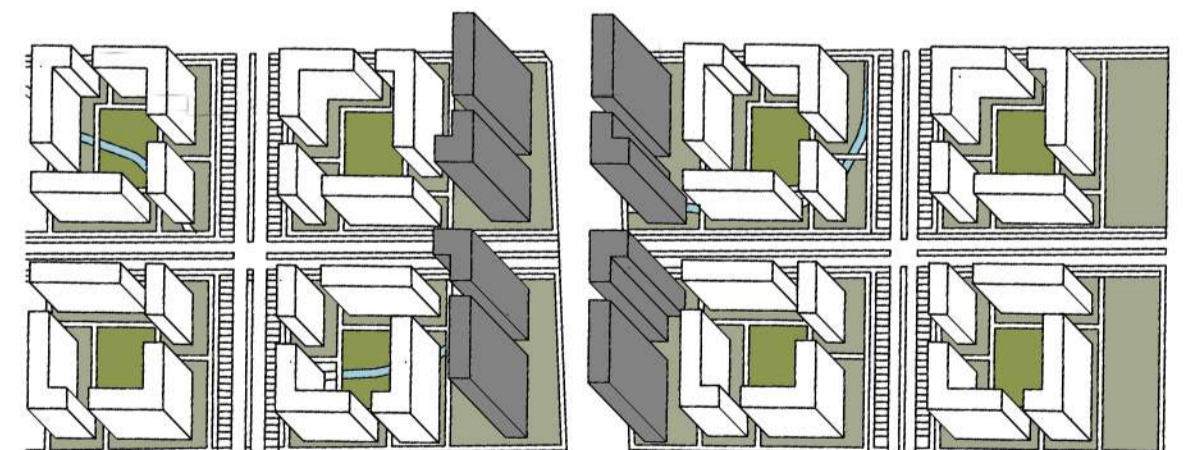
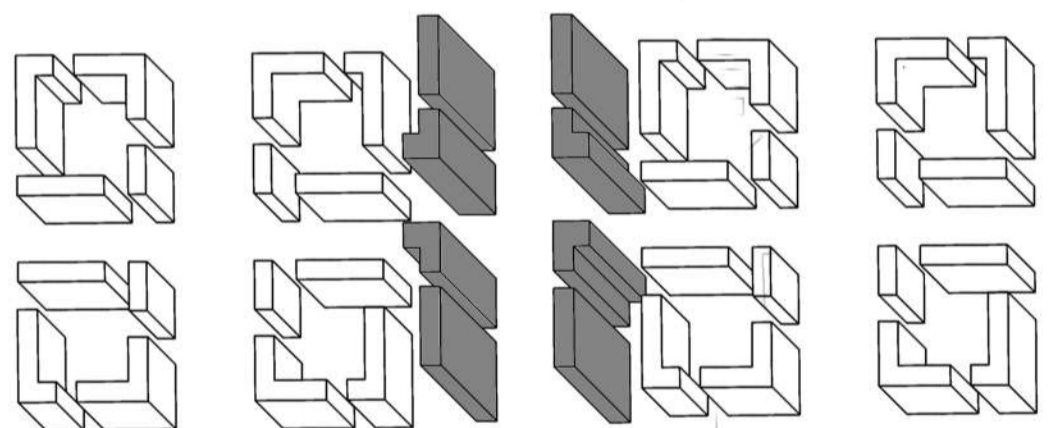
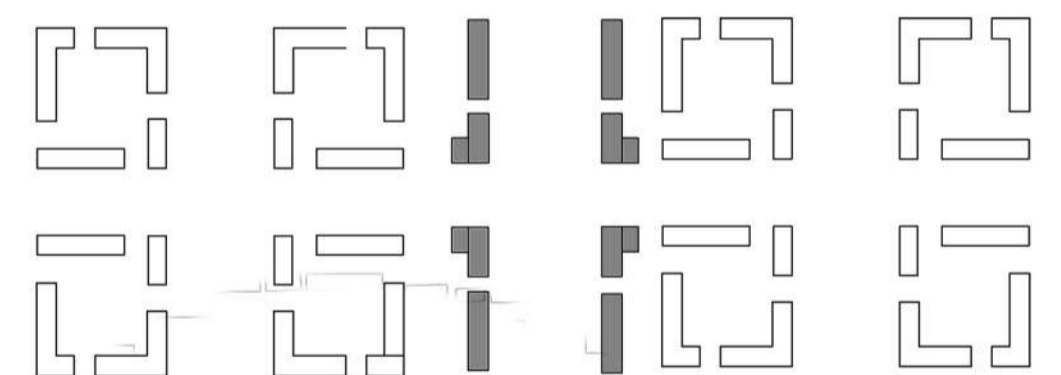


<http://www.utopia.se/en/projects/nya-hovas>

SCHEME OF BUILDINGS:



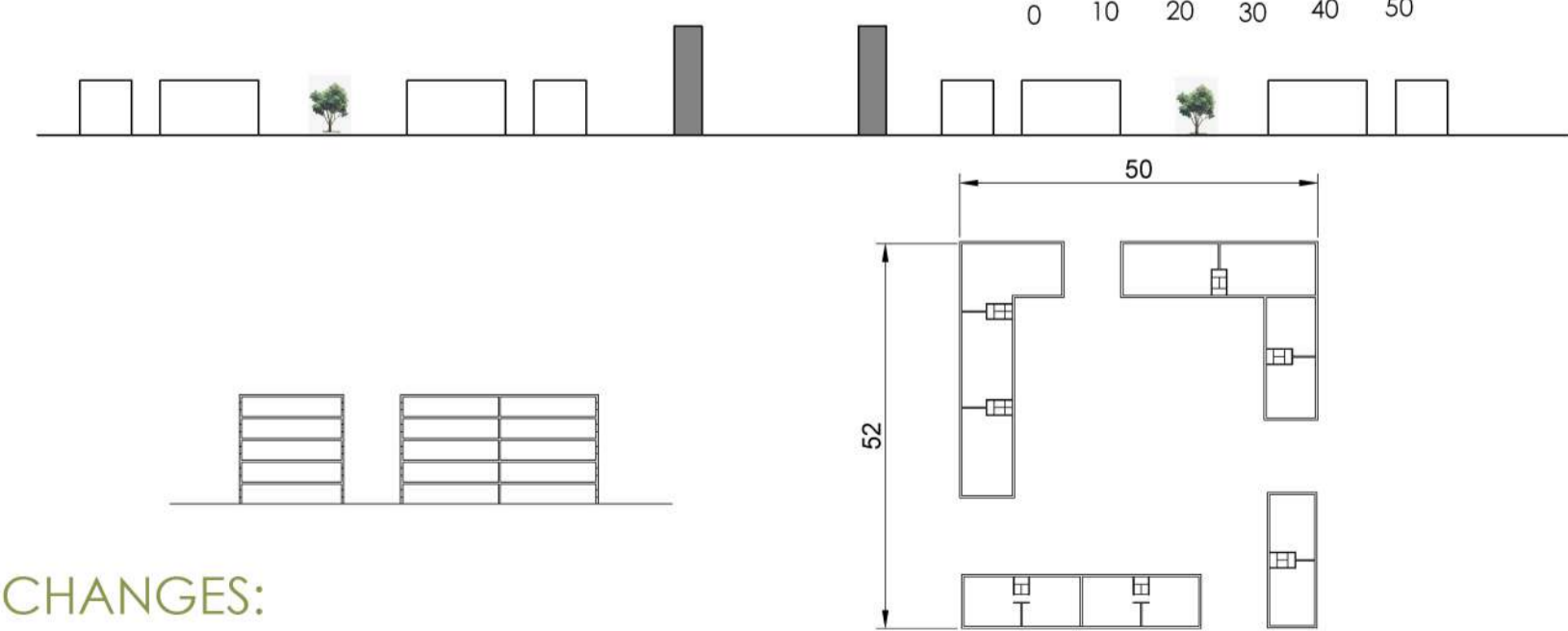
COMMERCIAL BUILDINGS:



1:500 0 5 10 15 20 25 m

- LEGEND:**
- STREETS
 - COMMERCIAL BUILDINGS
 - GREENERY
 - PATIO/ SHARED GREEN AREAS
 - CYCLING PATH

1:1000 0 10 20 30 40 50 m



CHANGES:

WATER CANALAS

- =REDUCING HEAT ISLAND
- =CREATING NATURE-FRIENDLY ENVIORMENT
- =AIR QUALITY IMPROVEMENT
- =WATER FILTRATION
- =RAINWATER HARVESTING

COMMERCIAL BUILDINGS NEXT TO THE MAIN STREET

- =CREATING BARRIER FROM THE NOISE
- =DIVIDING BUILDING WITH DIFFERENT FUNCTIONS IN ONE AREA

CREATING MORE CYCLING PATHS

- =REDUCING CAR USES
- =CREATING MORE FRIENDLY ENVIORMENT

PUTTING MAIN ROAD ON UPPER LEVEL

- =SEPARATING RESIDENCIAL AREAS FROM THE MAIN ROAD, FROM TRAFFIC NOISE AND POLLUTION
- =CREATING MORE SAFE ENVIORMENT AROUND LIVING AREAS
- =CONNECTING THE WHOLE RESIDENCIAL AREA TOGETHER