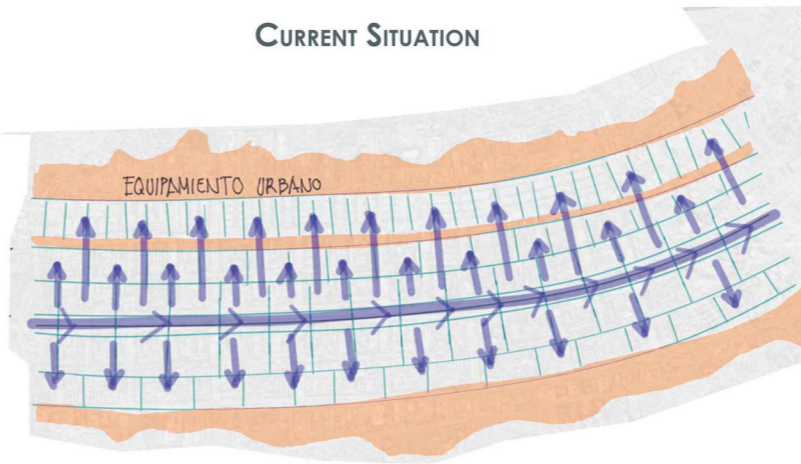


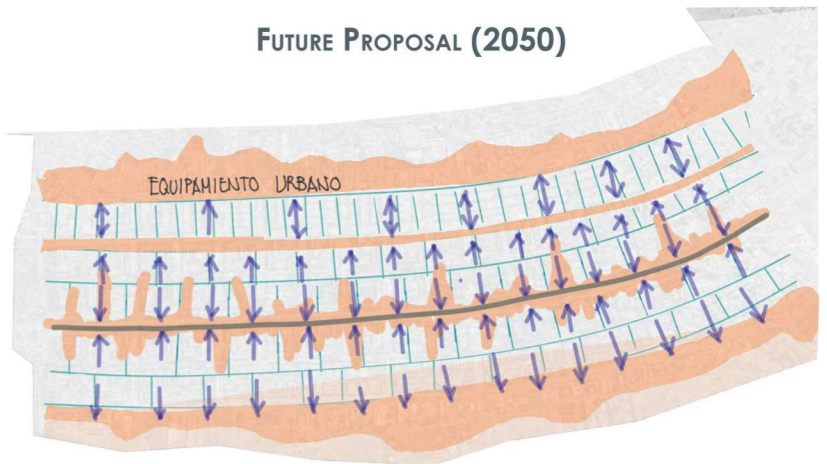
MODEL PHOTOS

CONCEPTUAL DIAGRAM OF TRANSFORMATION OF PUBLIC SERVICES AND MOVEMENT IN BRASILIA

CURRENT SITUATION



FUTURE PROPOSAL (2050)



ESCALA GRAFICA :
1/5000
0 50 100 150 200 250 (m.)



CURRENT URBAN FACILITIES

ADAPTATION OF CURRENT COMMERCIAL PREMISES

NEW MULTI-PURPOSE CLUSTER STYLE BLOCK

URBAN FACILITIES INCORPORATED IN THE NEIGHBORHOOD

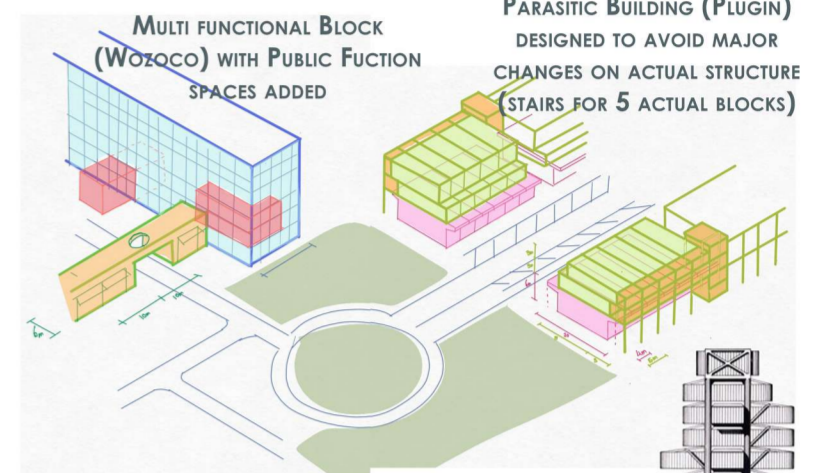
INCREMENTAL MEDIUM-DENSITY HOUSING

- PUBLIC SERVICES
- MOVEMENT TO PUBLIC SERVICES FROM RESIDENTIAL AREA

THE CURRENT ZONING OF BRASILIA DISTANCES ESSENTIAL SERVICES AND WORKPLACES FROM RESIDENTIAL AREAS, CREATING EXCESSIVE ROAD NETWORKS AND TRAFFIC CONGESTION. REDESIGNING THE CENTRAL AXIS BY INTEGRATING PUBLIC SPACES IMPROVES ACCESS, REDUCES TRAFFIC, AND ALLOWS FOR A MORE HUMAN-CENTERED URBAN ENVIRONMENT.

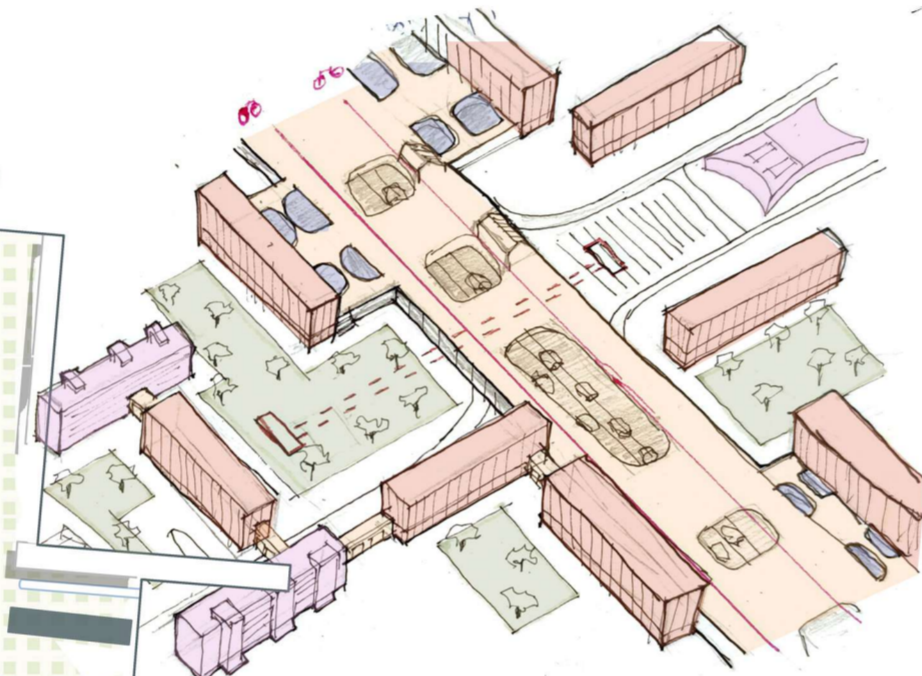
NODE 1

THIS NODE SHOWCASES KEY PROJECT STRATEGIES, INCLUDING A "PARASITIC" BUILDING INSPIRED BY "PLUGIN CITY", WHICH INTEGRATES WITH EXISTING COMMERCIAL AVENUES, ENHANCES CONNECTIVITY, AND PRESERVES NATURAL LIGHT. ADDITIONALLY, A MODULAR WALKWAY ADAPTABLE TO LET THE ROAD PASS THROUGH IT, CONNECTS BUILDINGS, FOSTERS NEW COMMUNITIES, COMMERCIAL SERVICES, AND CREATES PUBLIC REST SPACES, IMPROVING URBAN MOBILITY AND LIVABILITY.



SCHEMATIC IMPLEMENTATION IN THE BRASILIA PLAN

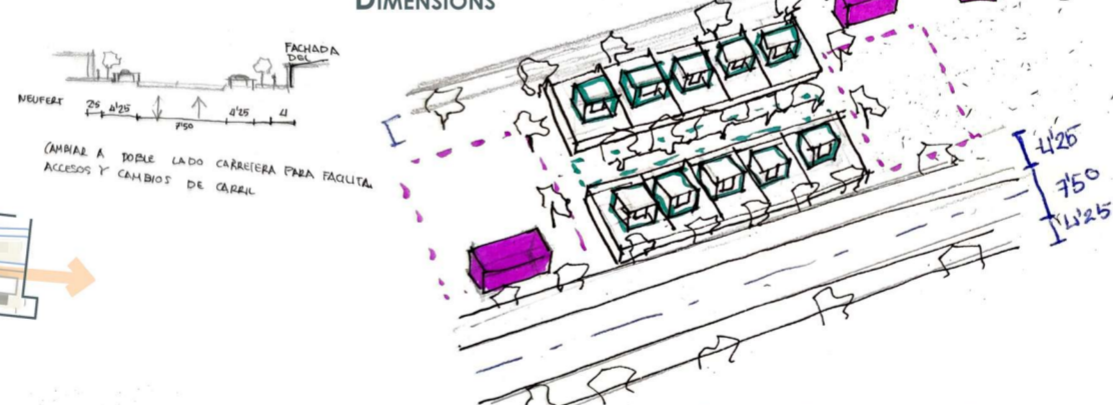
SITUATIONS AROUND THE MAIN INTERVENTION



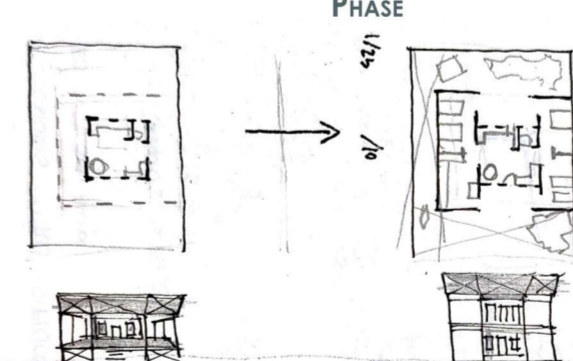
- REST SPACES CREATED BY THE NEW PLOT
- MULTI FUNCTIONAL BLOCK
- WALKWAY OVER THE AXIS, SURROUNDING REST SPACES AND CONNECTING BUILDINGS
- PARKING

HIGH MEDIUM SPEED CONNECTING SHAFT UNDER WALKWAY

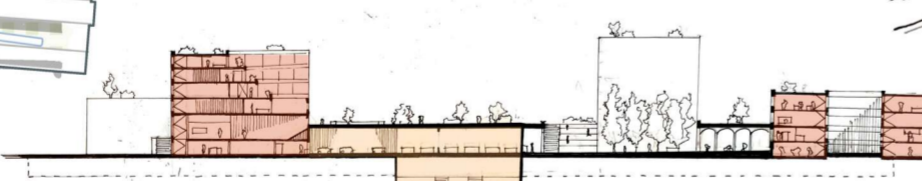
PUBLIC - PRIVATE SPACES DIMENSIONS



FLOOR PLAN AND FACADE OF RESIDENTIAL UNIT FIRST AND LAST PHASE

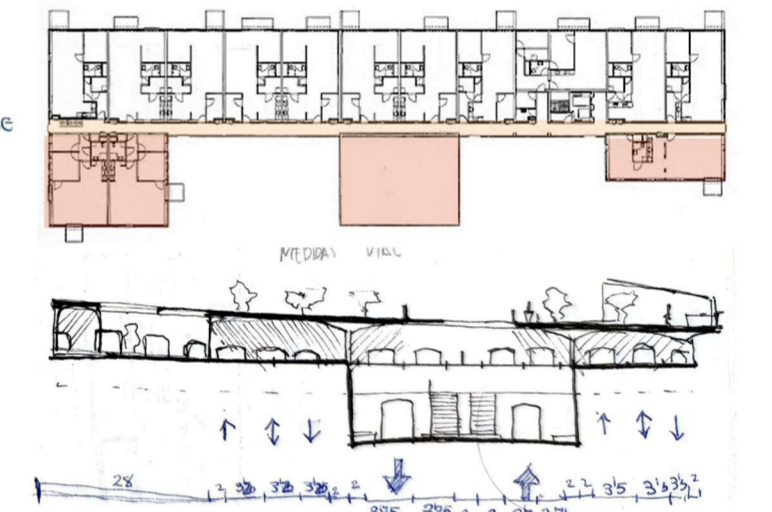


SECTION CUT OF THE MAIN AXE INTERVENTION



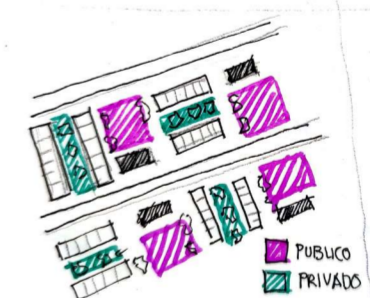
NODE 2

THIS REQUIRES AN EXTENSION AND IMPROVEMENT OF THE CURRENT URBAN STRUCTURE, ALLOWING FOR THIS INCREASE IN DENSITY AND TAKING ADVANTAGE OF THE INTERVENTION TO REDISTRIBUTE FUNCTIONS, OCCUPATION AND RELEASE OF PUBLIC SPACE AND TO RATIONALIZE MOBILITY INFRASTRUCTURES.



NODE 3

BRASILIA'S UNDERUSED LAKESIDE AREAS OFFER AN OPPORTUNITY FOR MEDIUM-DENSITY NEIGHBORHOODS CONNECTED BY A MULTIFUNCTIONAL WALKWAY. INSPIRED BY IQUITO (PERU) INCREMENTAL HOUSING, THE WOODEN STRUCTURES ADAPT TO DEMOGRAPHIC NEEDS WHILE PROMOTING YOUTH EMPLOYMENT THROUGH WOODWORKING WORKSHOPS. THE LAYOUT BALANCES PRIVACY AND COMMUNITY, WITH HOMES SURROUNDING A PUBLIC PLAZA AND NATIVE TREES CREATING NATURAL BARRIERS BETWEEN RESIDENTIAL ROWS.



QUARESMEIRA (TIBOUCHINA GRANULOSA)

STRATEGY TAKEN

MY STRATEGY FOR A BRASILIA WITH TWICE THE POPULATION BY 2050 FOCUSES ON WEAVING A NEW URBAN FABRIC TO ADDRESS MOBILITY ISSUES CAUSED BY THE CITY'S MODERN ZONING MODEL. THE CHOSEN TYPOLOGY ALIGNS WITH THE SCALE OF EXISTING PUBLIC SPACES AND THEIR FUNCTIONS, AIMING TO DOUBLE THEIR CAPACITY WHILE MAINTAINING SPATIAL COHERENCE.

CURRENTLY BRASILIA HAS A POPULATION OF 3.015.268 INHABITANTS, AND IN THIS HYPOTHETICAL FUTURE THE CITY MUST HOUSE TWICE AS MANY CITIZENS AS IT CURRENTLY HOUSES, THAT IS: $3.015.268 \times 2 = 6.030.536$ INHABITANTS.

THIS REQUIRES AN EXTENSION AND IMPROVEMENT OF THE CURRENT URBAN STRUCTURE, ALLOWING FOR THIS INCREASE IN DENSITY AND TAKING ADVANTAGE OF THE INTERVENTION TO REDISTRIBUTE FUNCTIONS, OCCUPATION AND RELEASE OF PUBLIC SPACE AND TO RATIONALIZE MOBILITY INFRASTRUCTURES.



SEWING BRASILIA

URBAN AND ARCHITECTURAL TRANSFORMATION PROJECT IN BRASILIA

WORK MADE BY RAMIRO ISLA ESPADAFOR, URBANISM 1 GROUP C

COURSE 2024/25 - EXTRAORDINARY CALL