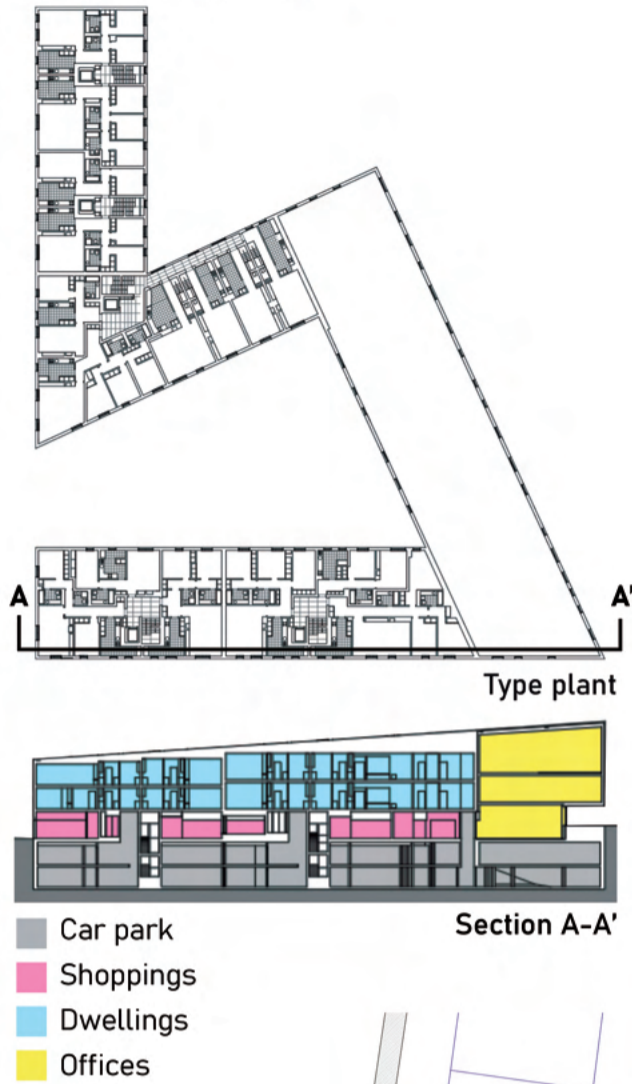
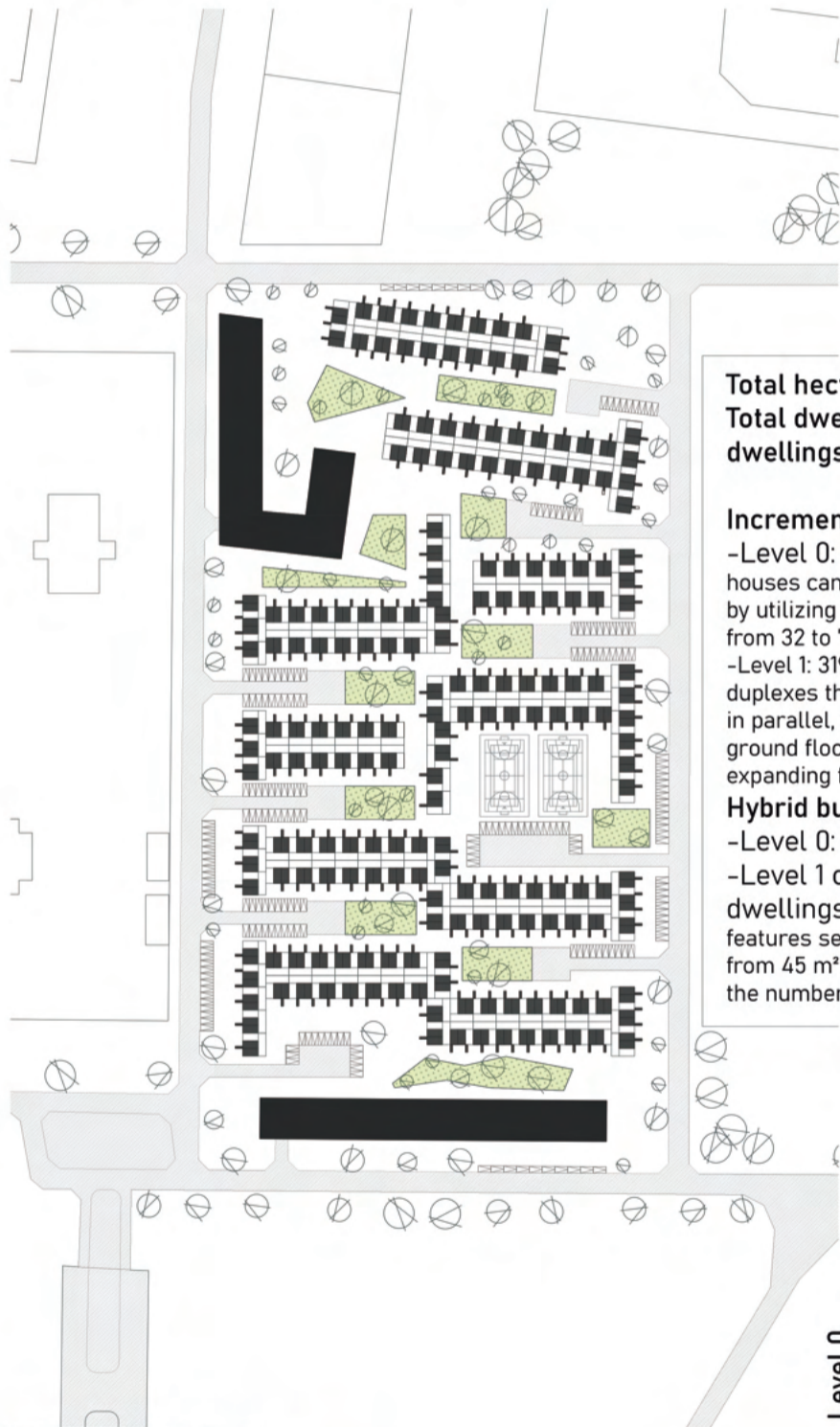
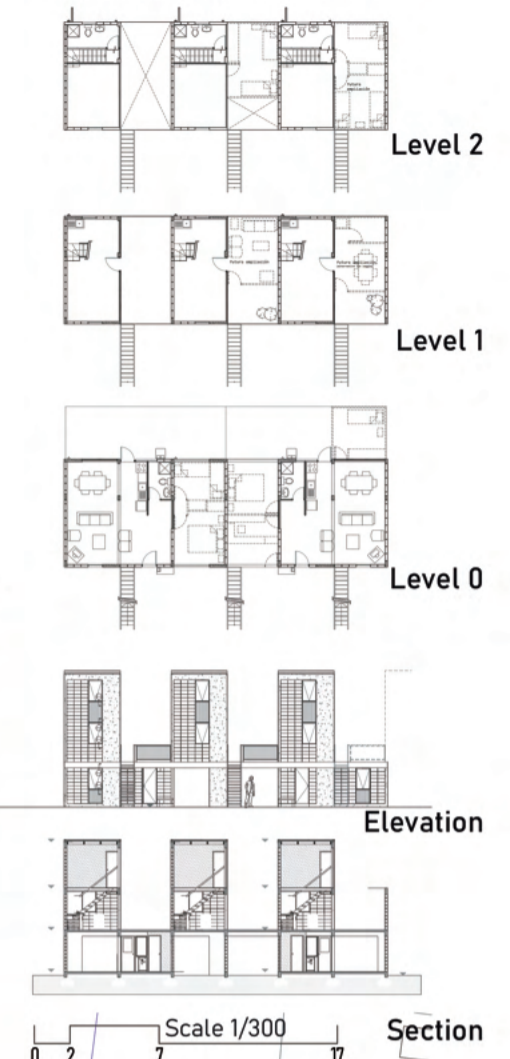


Hybrid building typology  
Housing offices and retail building  
Gonzalo Byrne Arquitectos

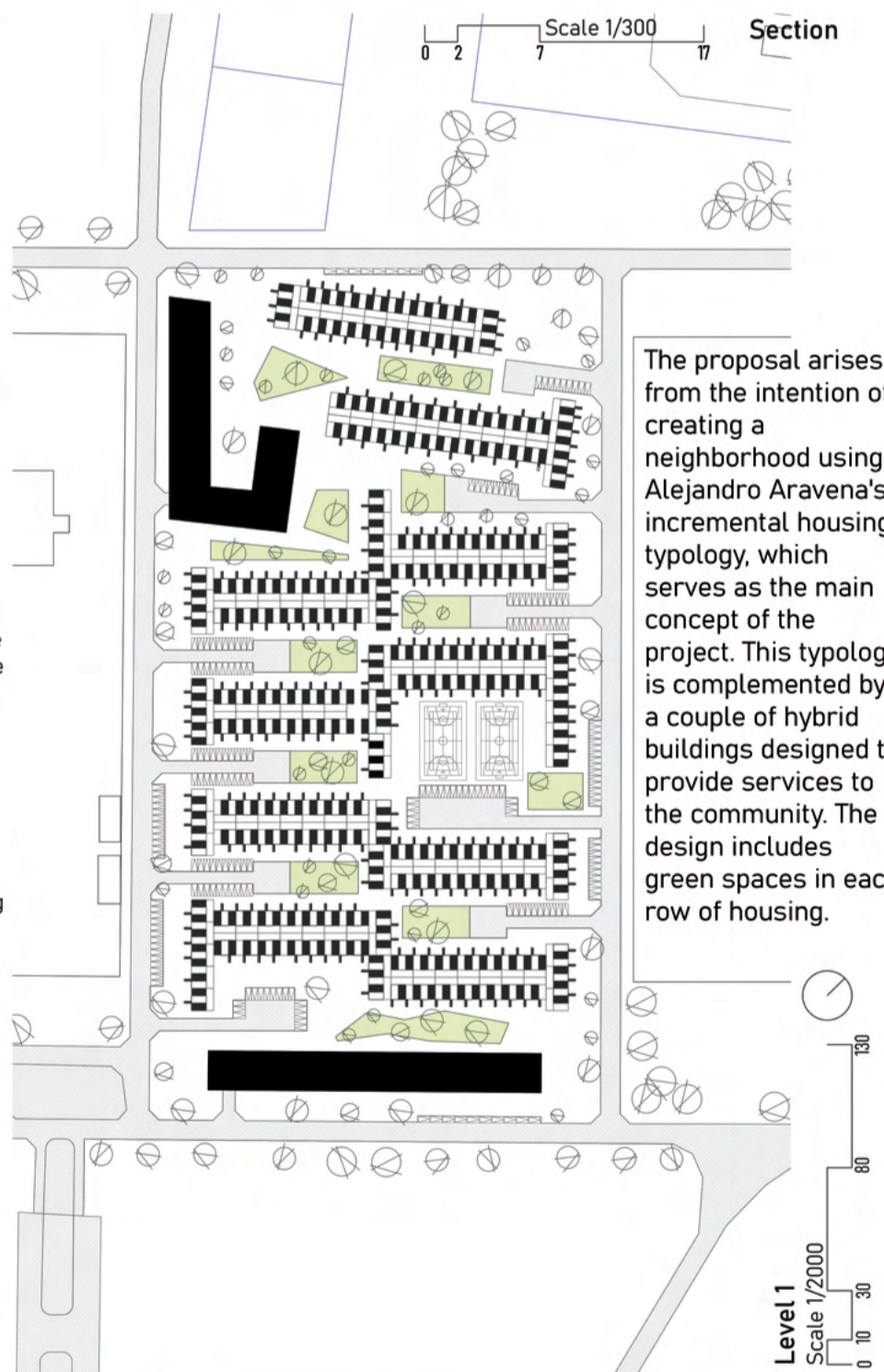


Low density dwellings typology  
La Quinta Monroy  
Elemental\_ Alejandro Aravena

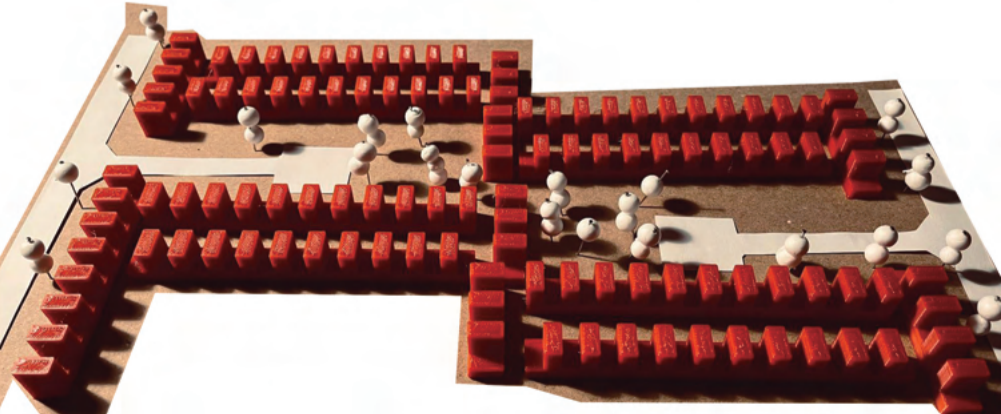
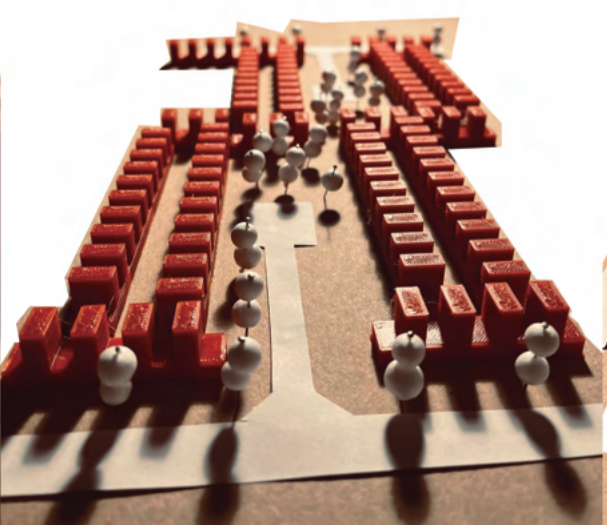


Total hectares: 6,1 ha  
Total dwellings: 552 units  
dwellings/hectares: 90

**Incremental dwellings:**  
-Level 0: 193 units (These houses can increase their volume by utilizing the land, expanding from 32 to 70 m<sup>2</sup>)  
-Level 1: 319 units (these homes are duplexes that increase their volume in parallel, using the floor of the ground floor house as a base, expanding from 30 to 72 m<sup>2</sup>)  
**Hybrid buildings:**  
-Level 0: shoppings  
-Level 1 or higher: offices or dwellings (The hybrid building features several typologies, ranging from 45 m<sup>2</sup> to 80 m<sup>2</sup>, depending on the number of bedrooms.)



The proposal arises from the intention of creating a neighborhood using Alejandro Aravena's incremental housing typology, which serves as the main concept of the project. This typology is complemented by a couple of hybrid buildings designed to provide services to the community. The design includes green spaces in each row of housing.



Model of a row of houses