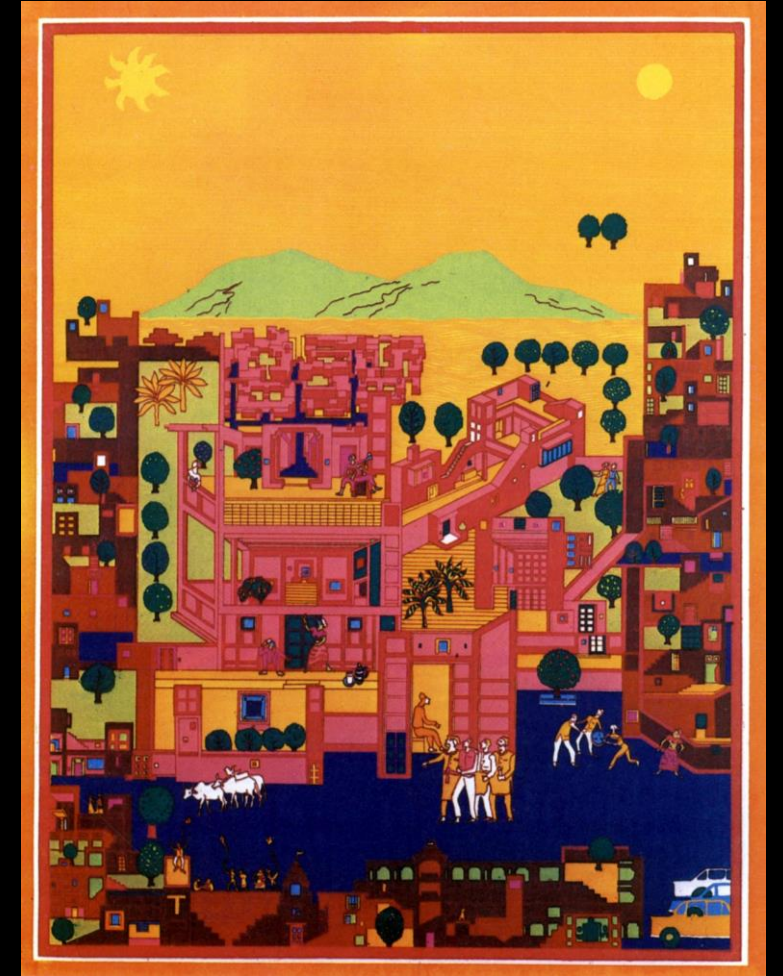
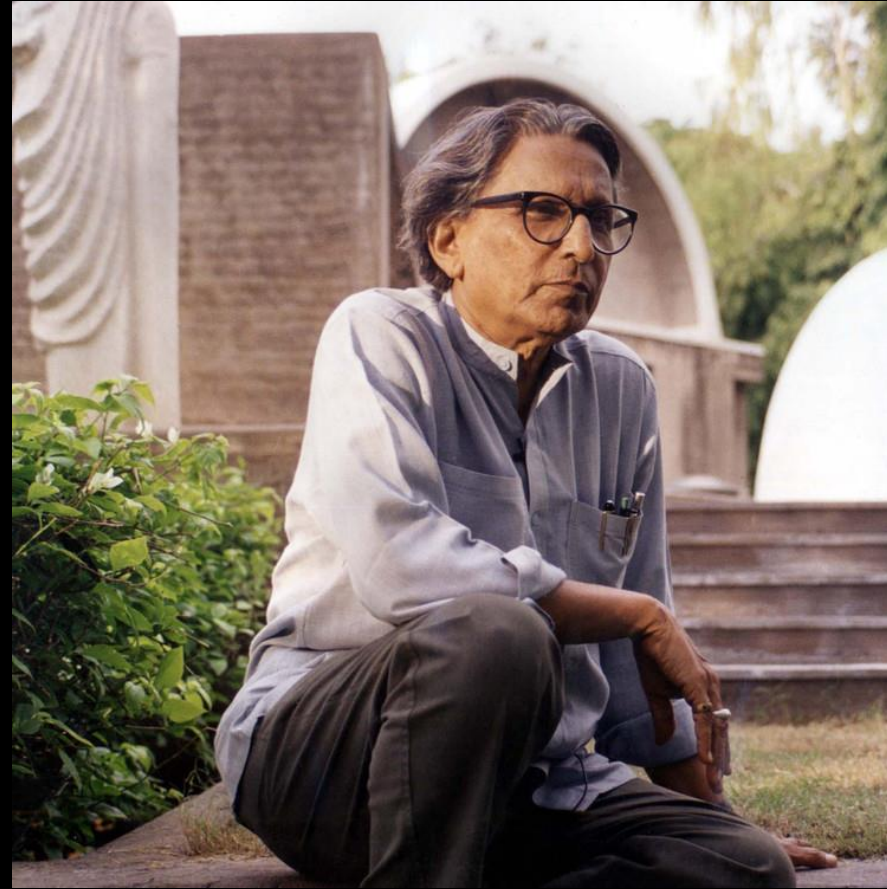


Vidhyadhar Nagar Masterplan

Balkrishna Doshi



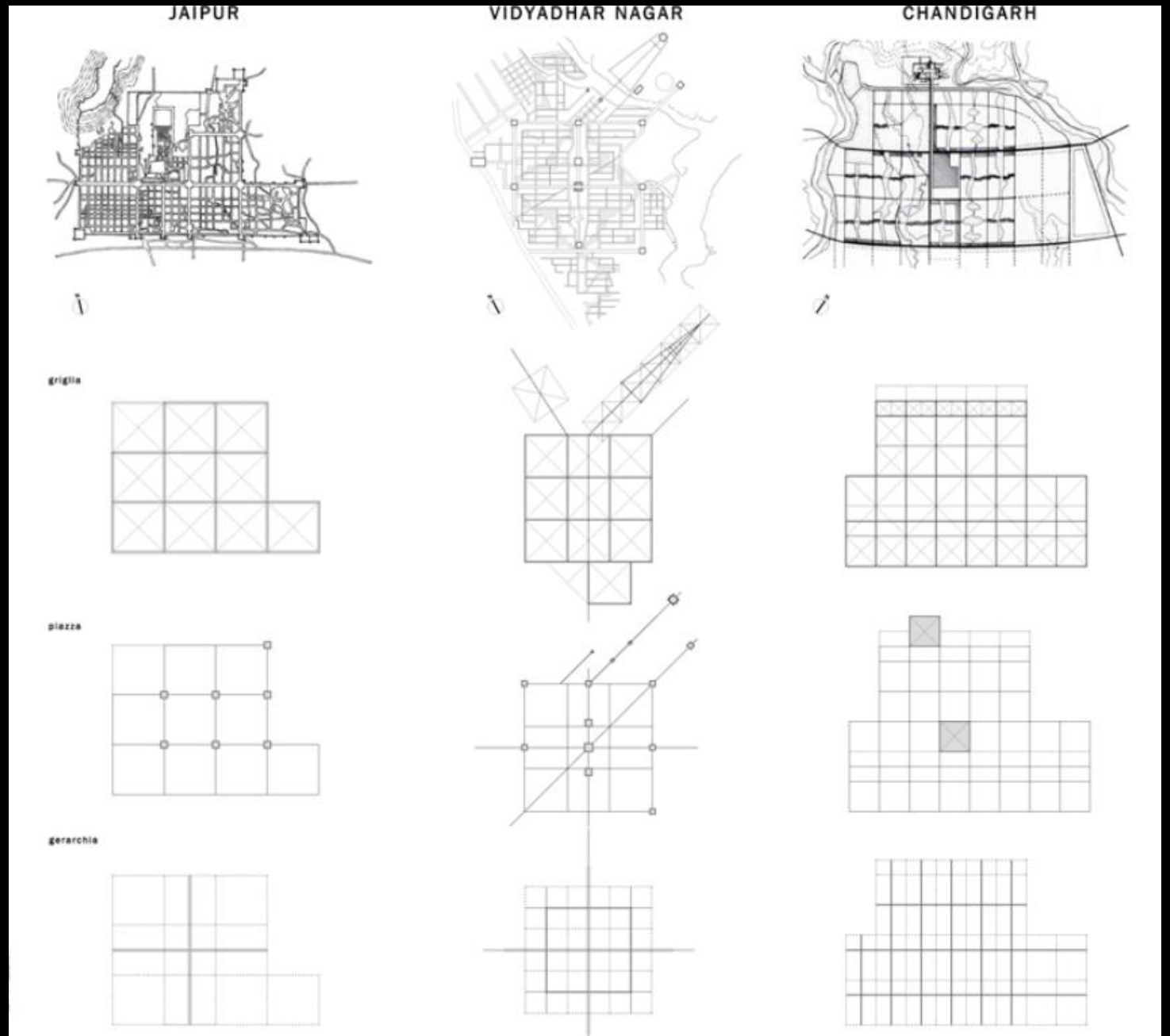
Arquitecto



Problemáticas e inquietudes



Geometría



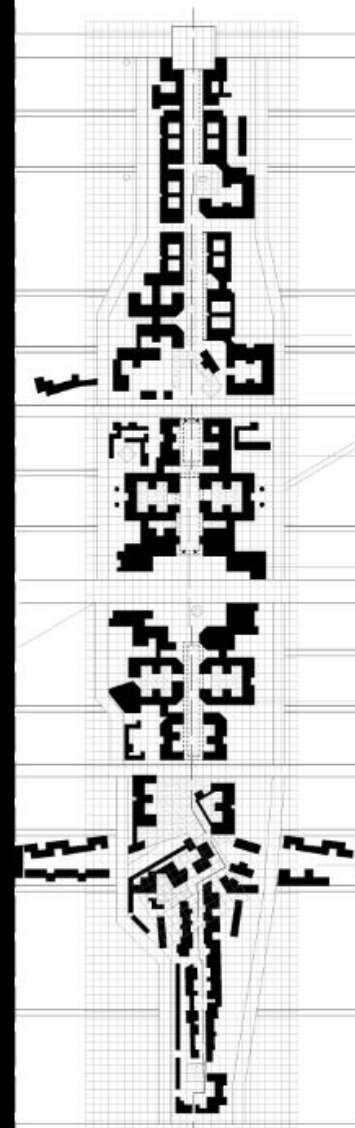
Eje centrador

USO DEL SUOLO | SISTEMA DELLE ATTIVITA'



attività commerciali e industriali

AGGREGAZIONE: ASSE ATTIVO CENTRALE E ISOLATI



STRUTTURA DELL'EDIFICATO DELLA SPINA CENTRALE

area culturale
educativa
istituzionale
(ex museo,
biblioteca)

commercio e
shopping

commercio
al dettaglio

uffici
governativi

centro
commerciale
'pedonale'

bar

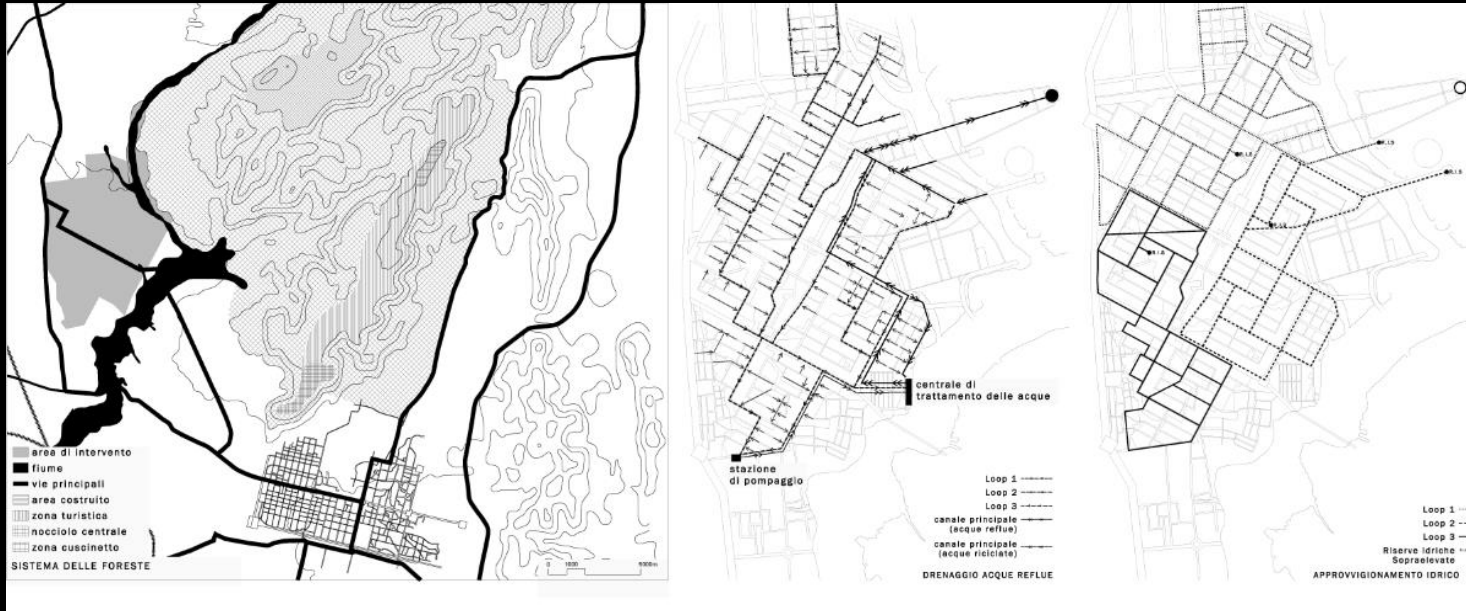


VISTA DEL MODELLO DEFINITIVO



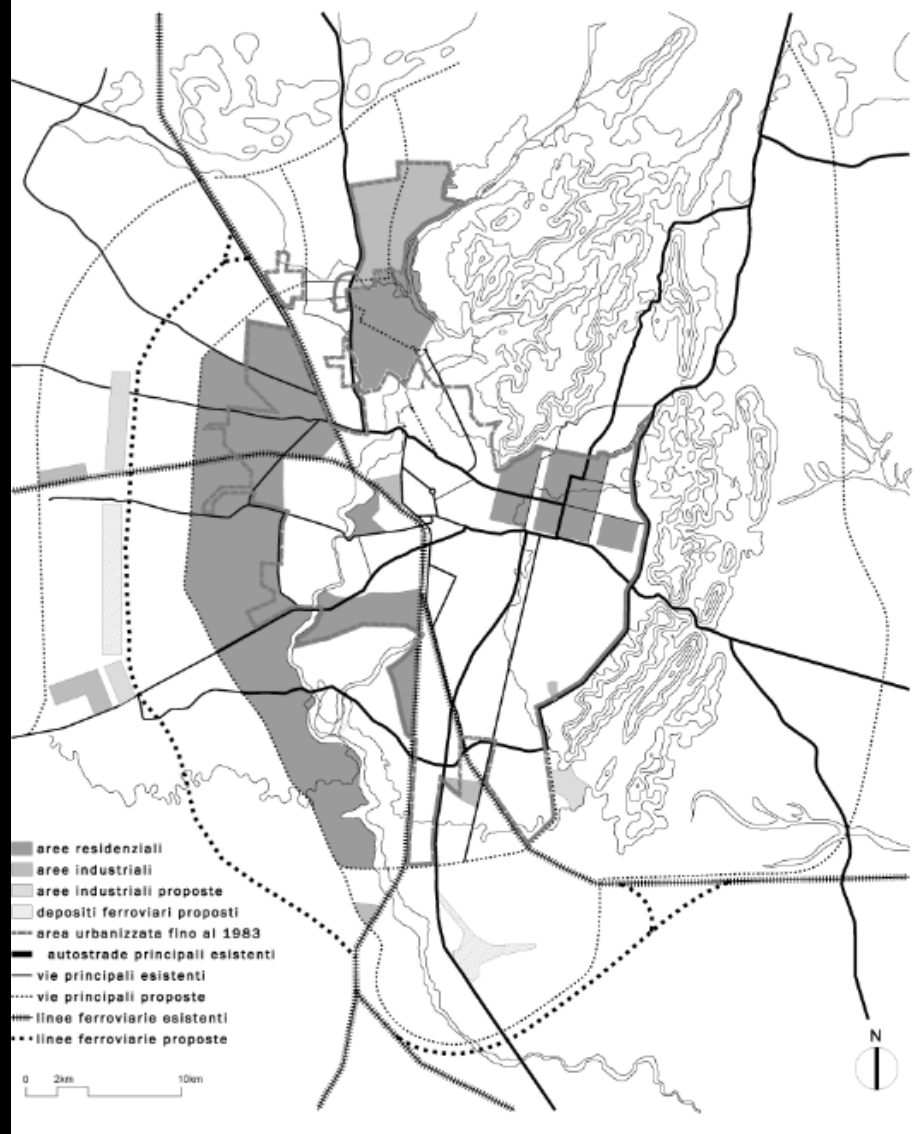
VISTA AEREA DELLA SITUAZIONE ATTUALE

Agua y zonas verdes



Usos y servicios públicos

PREVISIONE DI FUTURA ESPANSTONE
(aree lavorative e residenziali)



distribuzione dei servizi e aree verdi

Densidades

USO DEL SUOLO | SISTEMA DELLA RESIDENZA

distribuzione
schematica
della densità



densità bassa



densità media



densità alta



■ densità bassa
■ densità media
■ densità alta

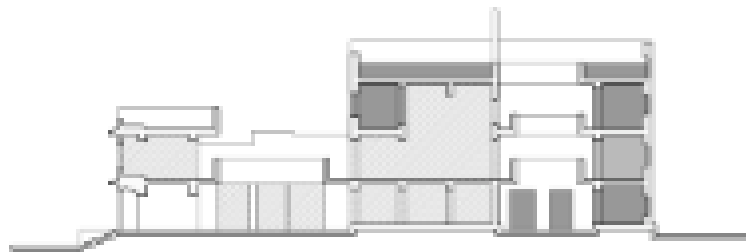
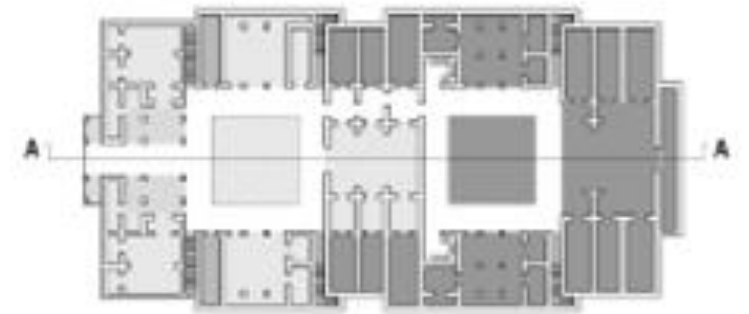
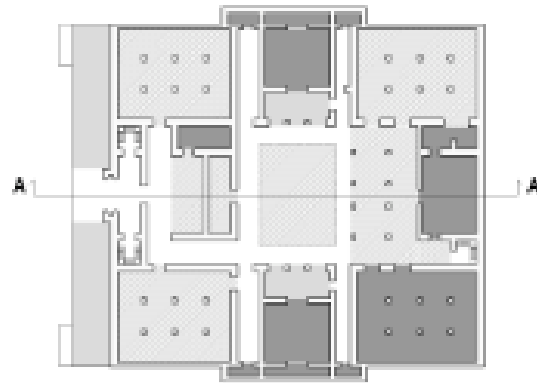
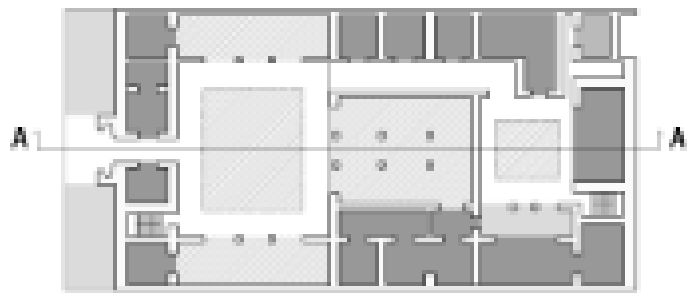
area residenziale a sviluppo pubblico



■ densità bassa
■ densità media
■ densità alta

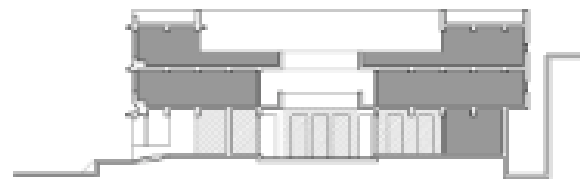
area residenziale a sviluppo privato

Tipología tradicional



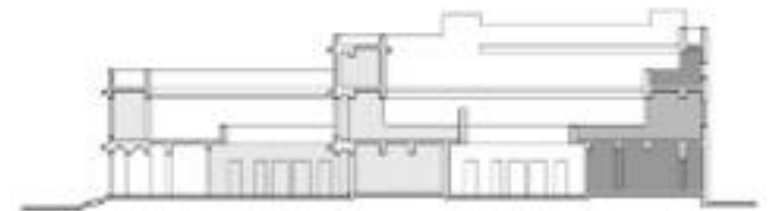
sezione A-A

DEVISINGHJI KI HAVELI



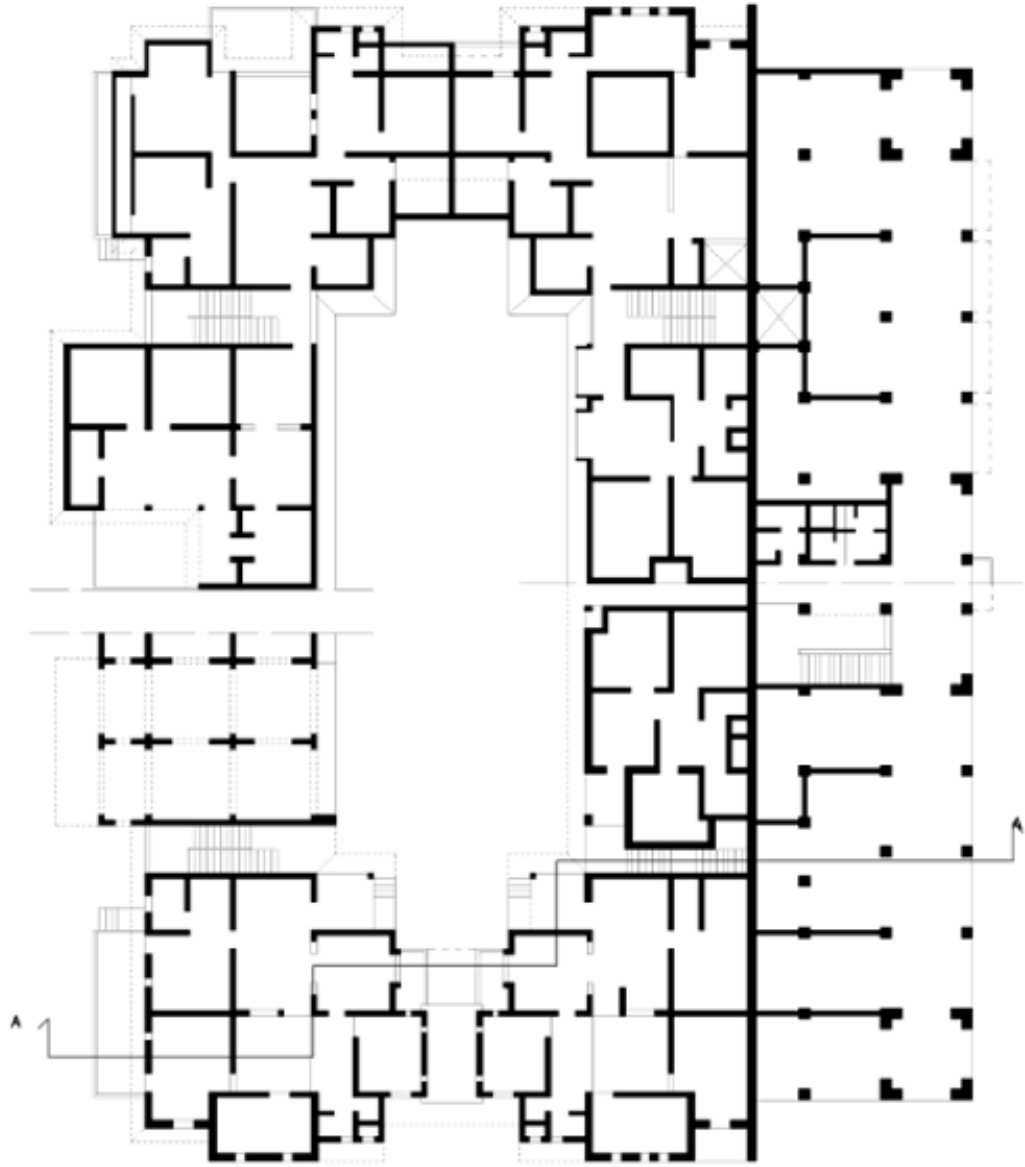
sezione A-A

DAROGAJI KI HAVELI



sezione A-A

Tipología propuesta

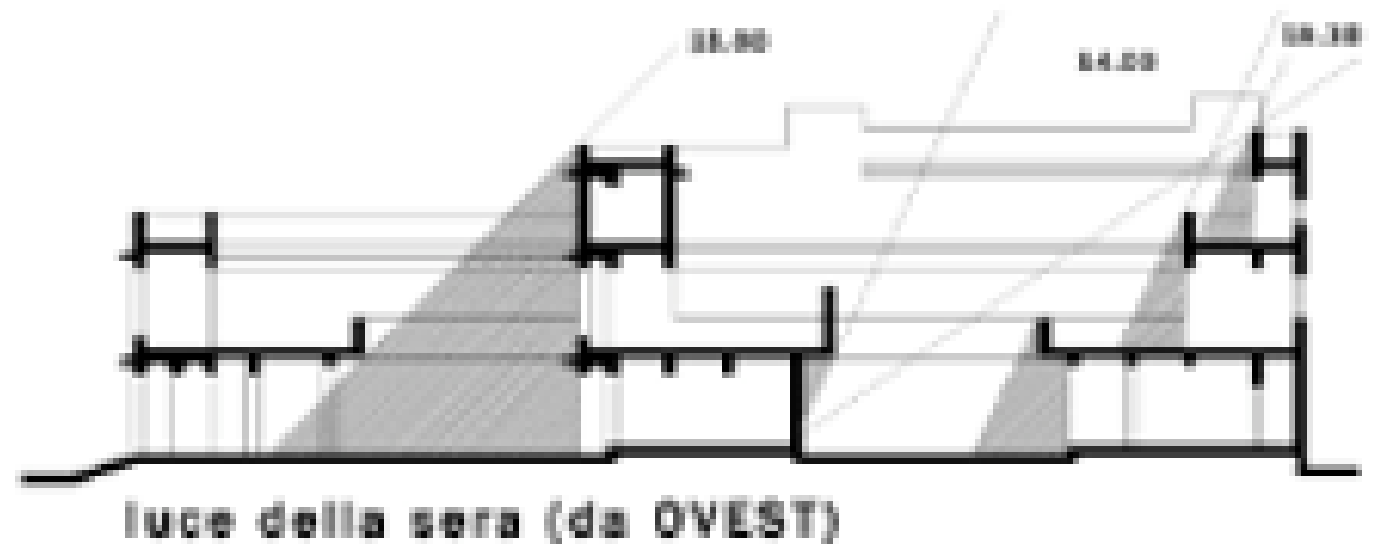
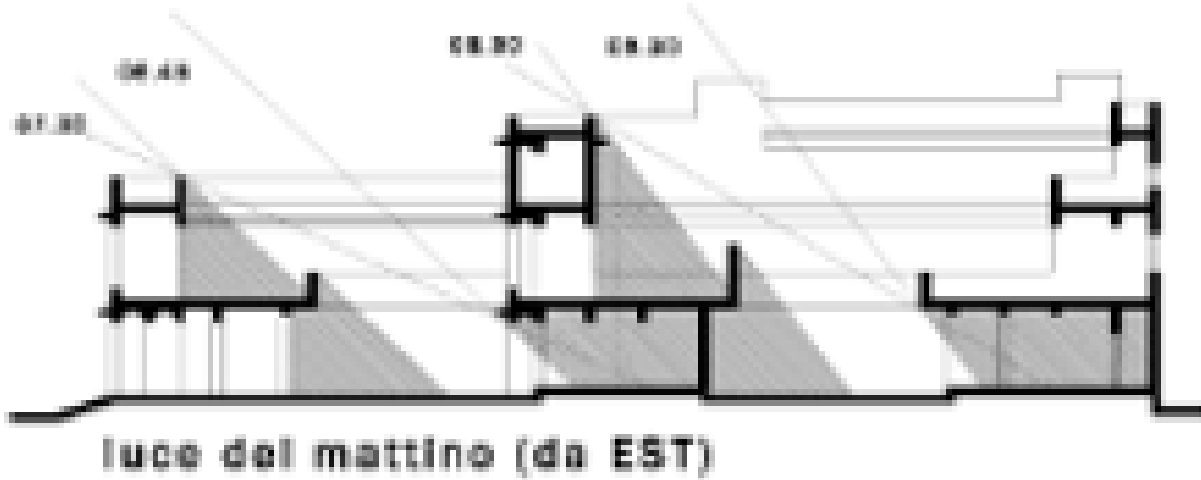


pianta piano terra, primo e secondo



sezione A-A

Estudio de la luz en la tipología



Conclusión

