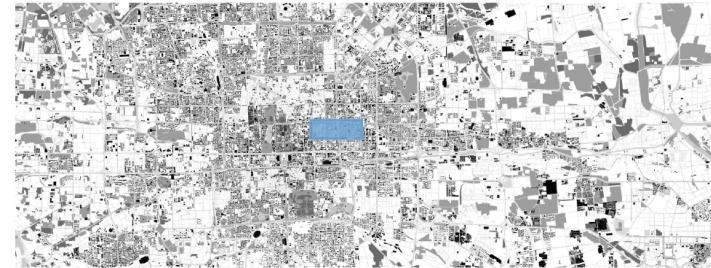
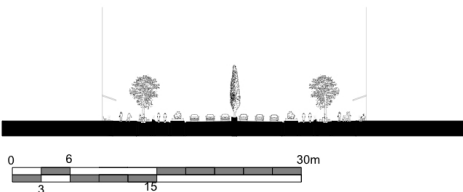


BEIJING



As Beijing faces the challenge of accommodating a rapidly growing population and evolving urban dynamics, I propose a visionary transformation of one of the city's historic streets. This project reimagines the urban fabric by revitalizing ancient canals and integrating them into the modern cityscape as vibrant recreational and cultural spaces. This initiative seeks to blend historical preservation with contemporary urban living, ensuring sustainability, accessibility, and enriched quality of life for all citizens.

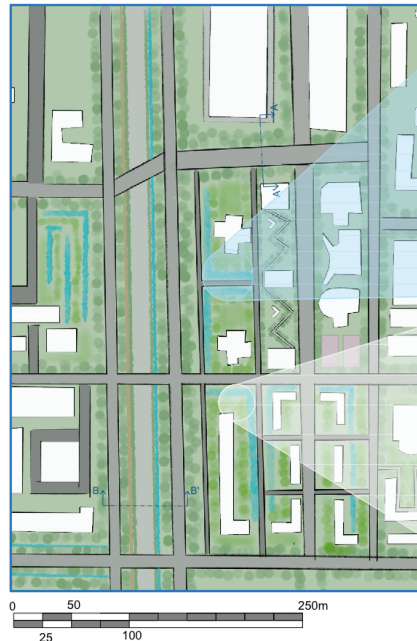
SECCION - AA'



SECCION - BB'



FOCUSED WINDOW



Environmental and Social Resilience:

Incorporate natural water filtration systems to ensure clean, sustainable water features while prioritizing accessibility with wheelchair-friendly paths and inclusive programming for all.

Sustainable Urban Mobility:

Integrate cycling paths and pedestrian walkways along the canal to reduce car usage and promote eco-friendly transportation options.

Fostering Community Interactions:

Develop cultural spaces for public events, markets, and performances to foster community engagement and celebrate local traditions.

Enhancing Public Spaces:

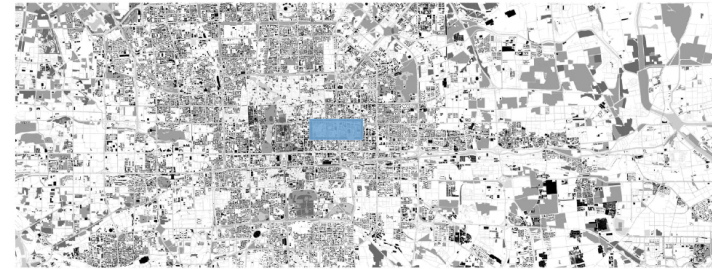
Surround the revitalized canal with shaded green areas, pedestrian zones, and multifunctional plazas to encourage vibrant social interactions and relaxation.

Reactivation of Ancient Canals:

Restore long-buried canals and transform them into green linear parks and dynamic water features that bring life back to the urban landscape.



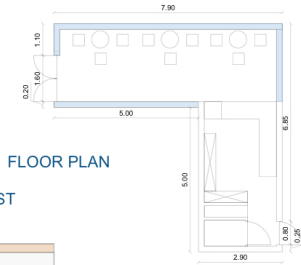
BEIJING



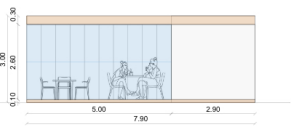
As Beijing faces the challenge of accommodating a rapidly growing population and evolving urban dynamics, we propose a visionary transformation of one of the city's historic streets. This project reimagines the urban fabric by revitalizing ancient canals and integrating them into the modern cityscape as vibrant recreational and cultural spaces. This initiative seeks to blend historical preservation with contemporary urban living, ensuring sustainability, accessibility, and enriched quality of life for all citizens.

PAVILLON - CAFETERIA

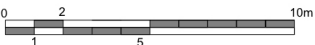
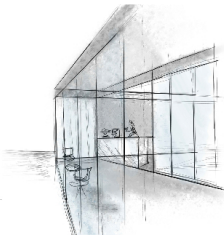
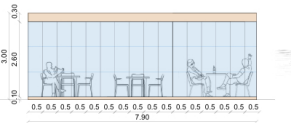
Between office buildings, two compact pavilions serve as relaxation zones for employees and passersby. With a lightweight frame, glass panels, and wooden accents, they blend modern design with a welcoming feel. One pavilion houses a small café with seating and a bar serving beverages.



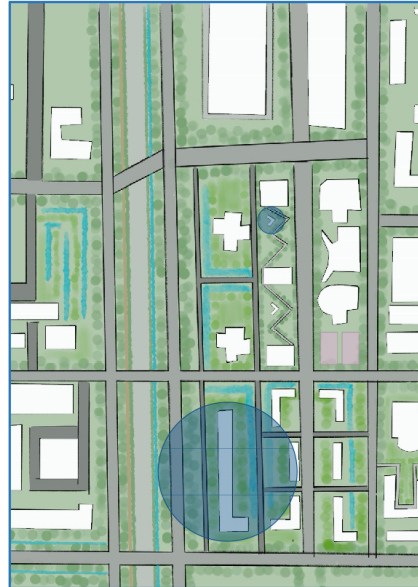
ELEVATION SOUTH- WEST



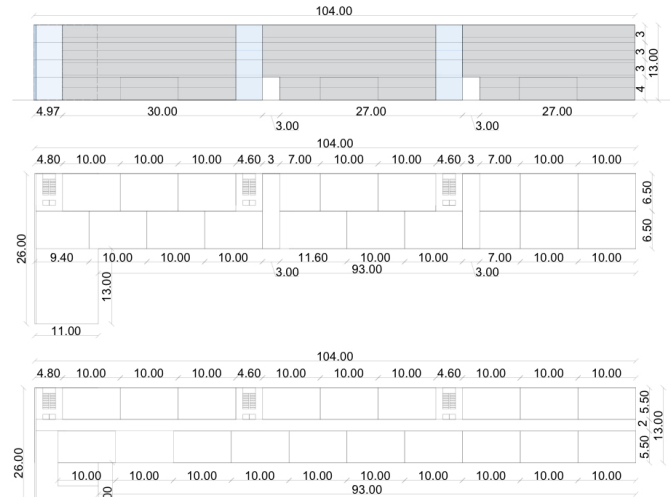
ELEVATION NORTH- EAST



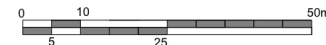
FOCUSED WINDOW



RESIDENTIAL BUILDING



The residential building is designed to accommodate a growing population, with ground-floor spaces dedicated to shops and services meeting residents' daily needs. The upper floors serve as residential zones, while the ground level features a 3-meter-wide passageway, extending the street and improving pedestrian connectivity. Each residential floor includes a designated sector with unique amenities tailored to enhance the living experience of its residents: supermarket, gym, etc.



BEIJING

CONCEPT

On low walls designed for pedestrians, I placed the history of the ancient city's origins and its influence on shaping the new part of the city. On the opposite side of the water reservoir, in a public space, I described the history of the old water channels that once supplied the city and now serve a recreational purpose for residents.

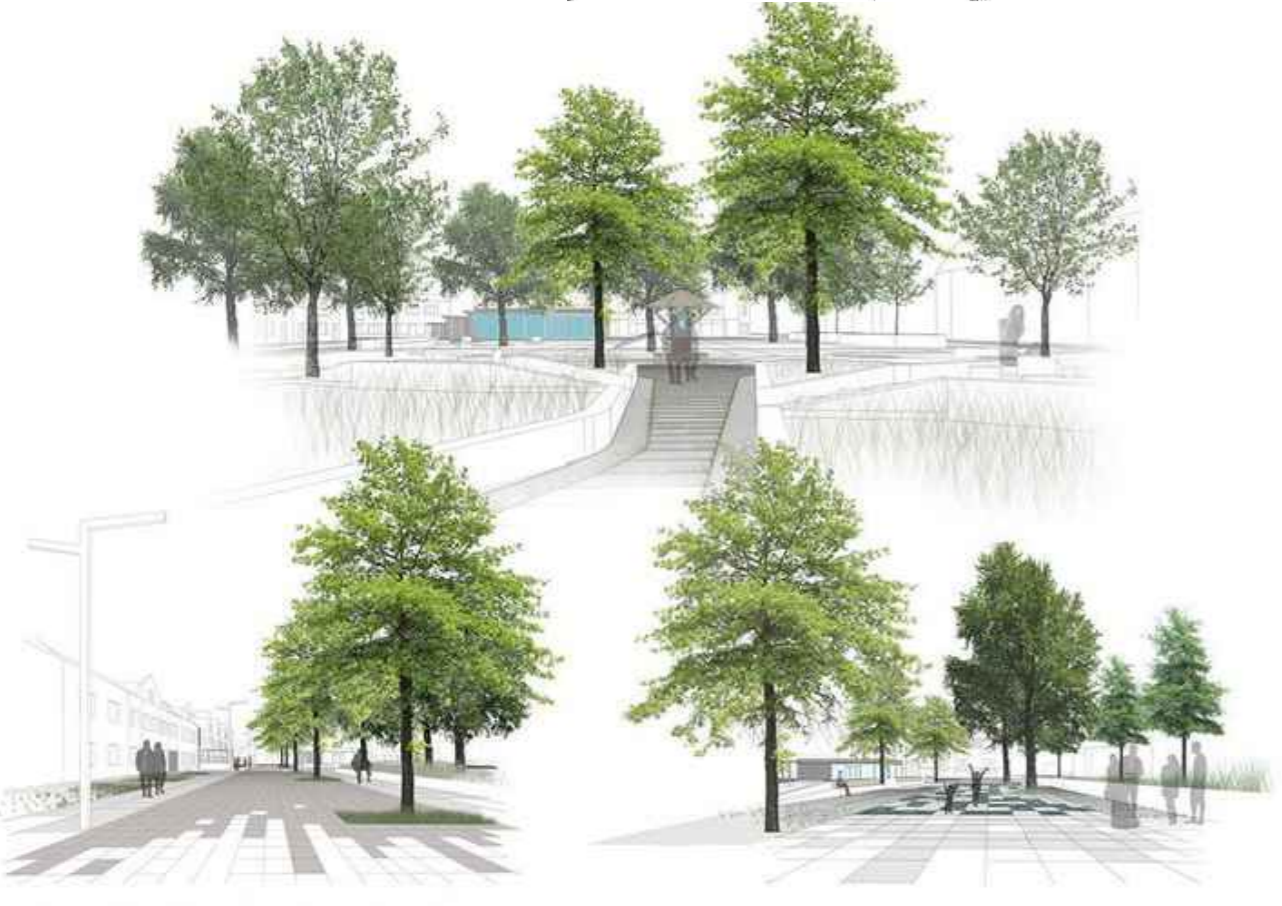


I designed the city's main street to improve the efficiency of transportation for both drivers and pedestrians. I created distinct zones for vehicle traffic, bicycles, and a wide pedestrian walkway to enhance comfort for people with disabilities and families with children. Each zone is separated by a green belt, which not only enhances the aesthetics but also supports the local ecosystem. Additionally, I incorporated a water reservoir to assist with rainwater drainage while also serving as a visually appealing element of the landscape.

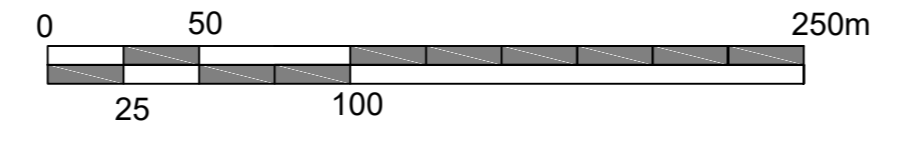
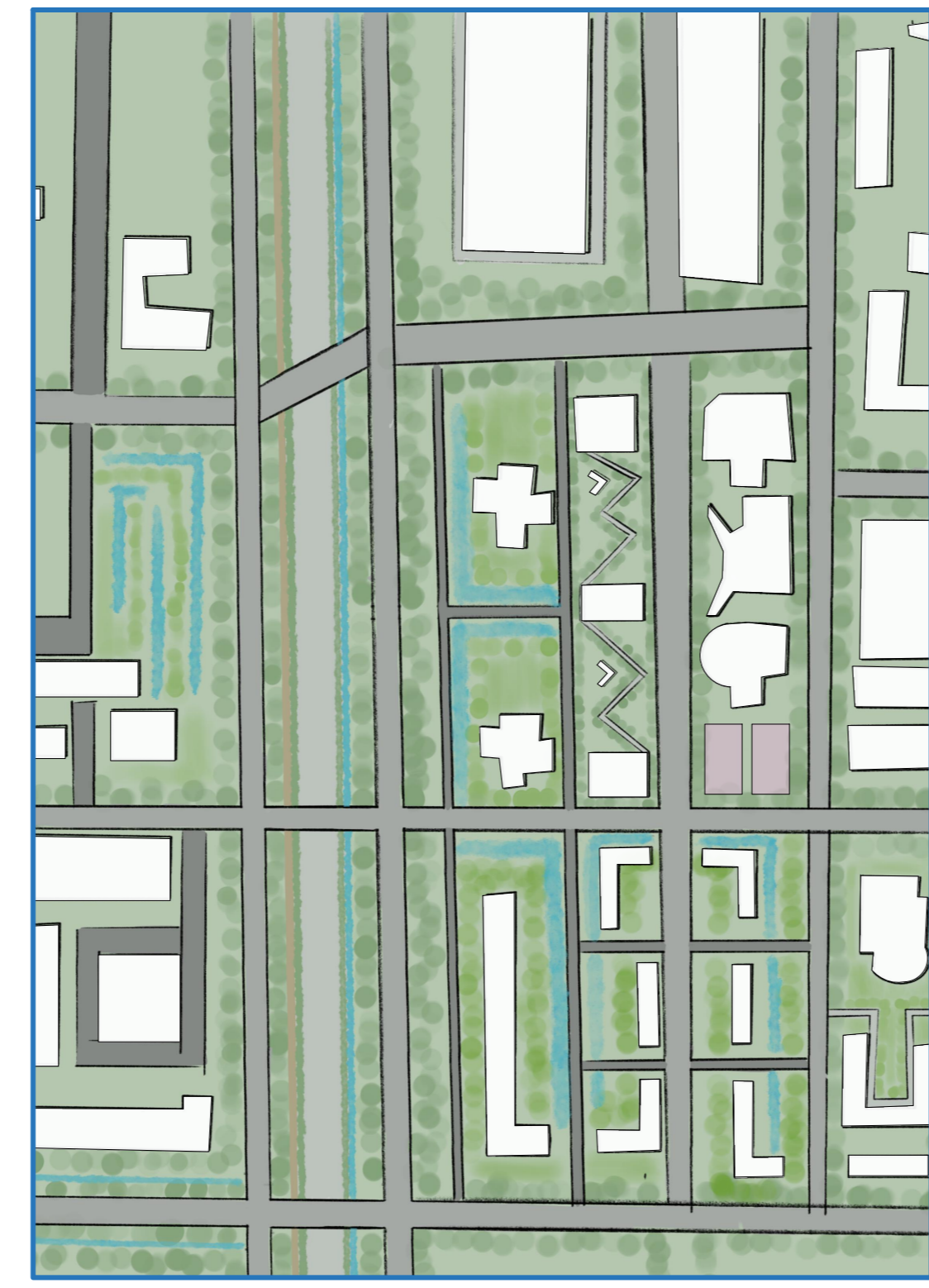


PAVILLON - CAFETERIA

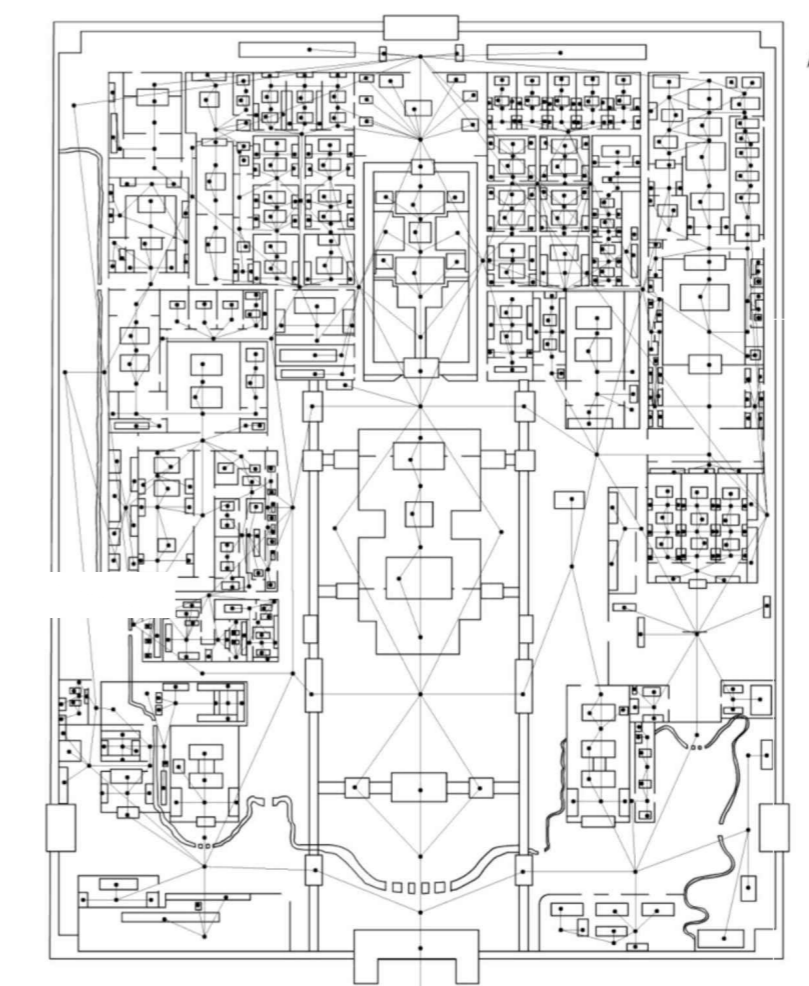
Between two office buildings, two minimalist pavilions provide tranquil spaces for employees and visitors. Designed with a modern twist on traditional Chinese architecture, one of the pavilions features clean lines and a curved roof, reminiscent of classic pagoda style, while the other incorporates wooden accents and large glass panels to ensure openness and light. Inside, a cozy café with seating and a bar serving drinks offers a peaceful retreat. The pavilions' design captures the essence of Chinese design principles—such as harmony with nature and balance—while integrating contemporary materials to create a stylish and welcoming atmosphere.



FOCUSED WINDOW



NEIGHBORHOOD DESIGN

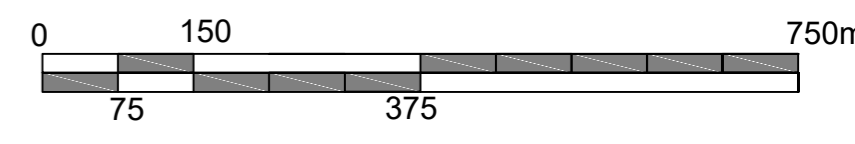


The main entrance of the street

The Forbidden City in Beijing is a perfect example of such coherence, as its architecture was designed in a way that all elements form a unified whole. The symmetry and order in the arrangement of buildings, gates, and streets align with the principles of Chinese philosophy and tradition, including feng shui, which aimed not only at aesthetic appeal but also at ensuring a balance between space and nature. The goal was not just to create beauty, but also to convey deeper meanings and cultural values.



The main entrance of the street



The cuts in the buildings are intended to connect different elements in a coherent and harmonious way. In the case of the Forbidden City, these solutions were meant to facilitate communication and bring order, but also to create the impression that the entire structure is one continuous whole, where every part of the building and space works together.

In the context of contemporary urban design near the Forbidden City in Beijing, I applied these principles to create new buildings that would respect the historical heritage while also being part of a vibrant, evolving city. The goal is to ensure that new constructions are not "disconnected" from the historical surroundings, but rather complement them, which is key to maintaining continuity in the urban landscape.

