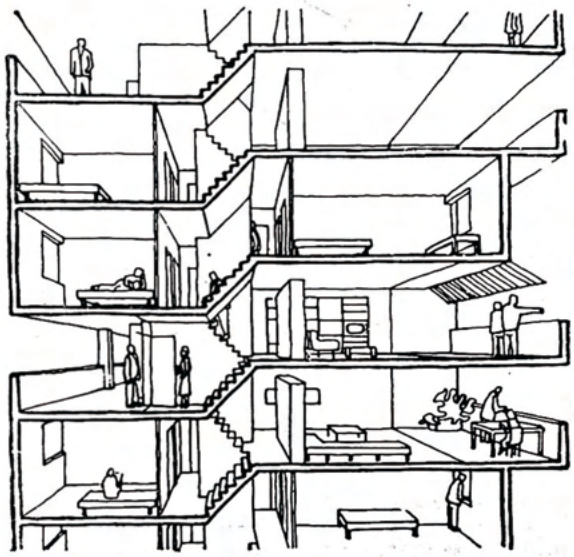
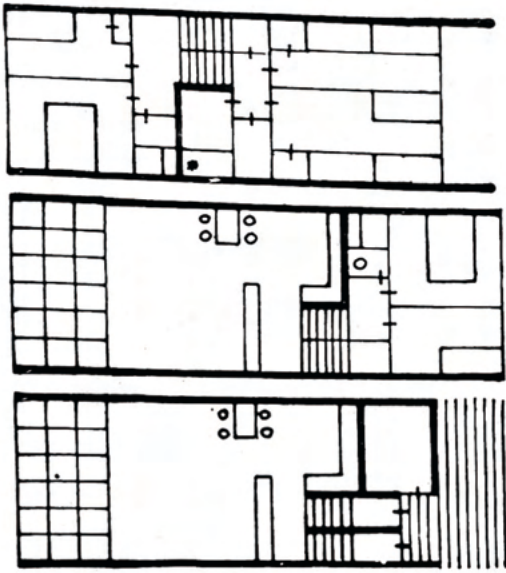
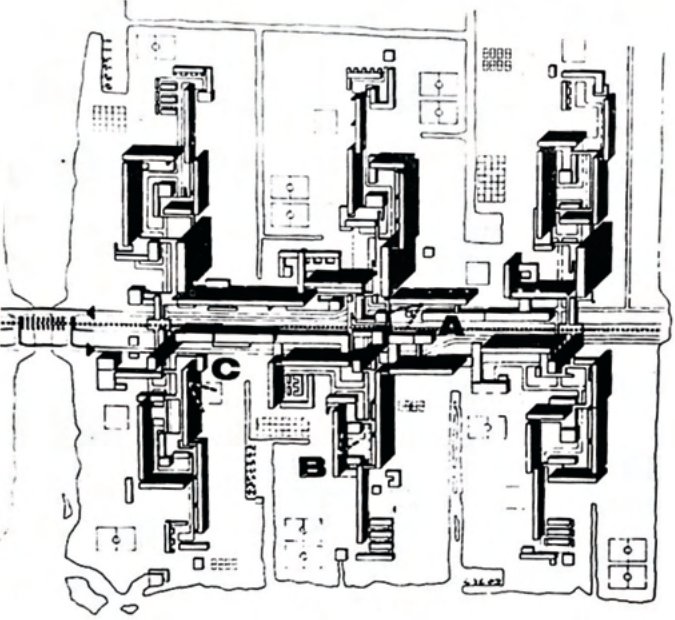


SEWING BRASILIA

PABLO CASERO



NEW TOWN HOOK TYPOLOGY



The proposal is based on establishing connections around the walkway that encloses the road, incorporating commercial, residential, and public buildings. This walkway will be primarily positioned along axes perpendicular and parallel to the road, with the potential to create spatially rich areas aimed at revitalizing the city, addressing pedestrian connectivity issues, and offering new housing solutions for the future.

PAMPUS (AMSTERDAM)

