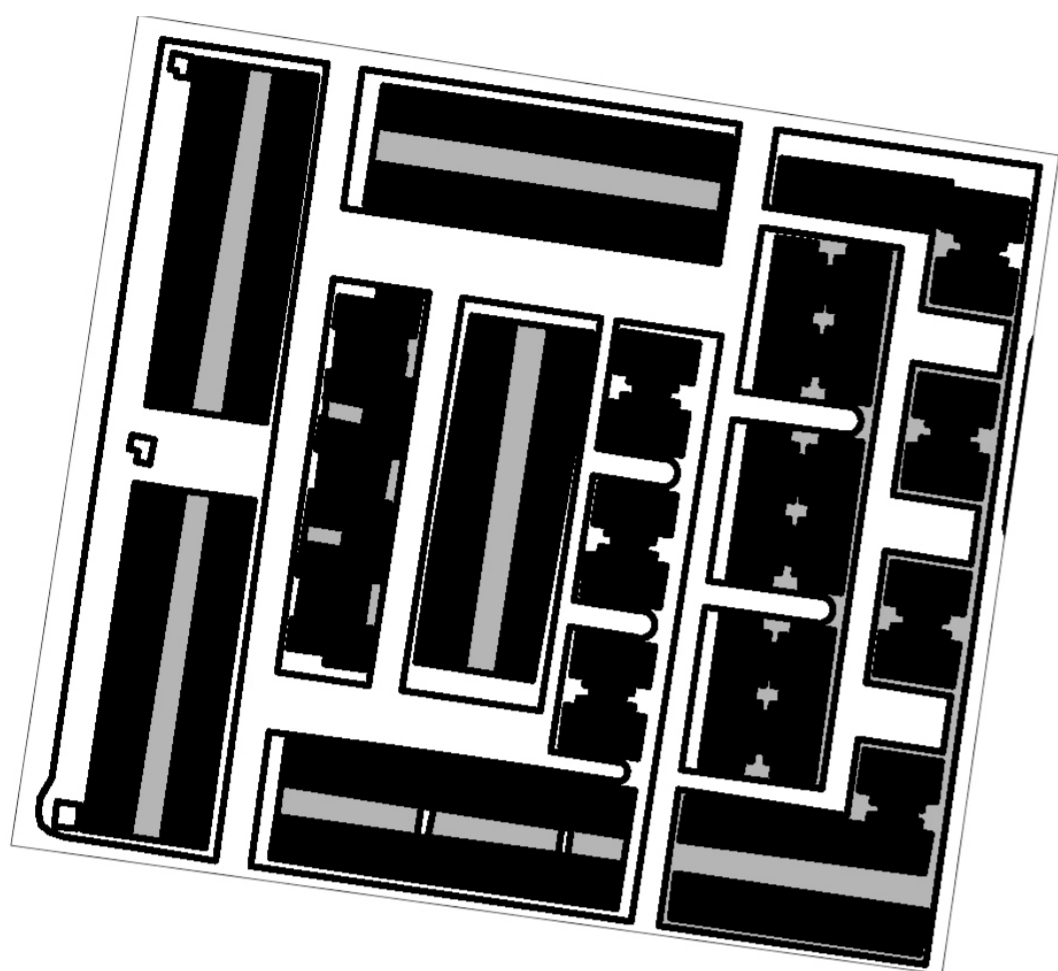
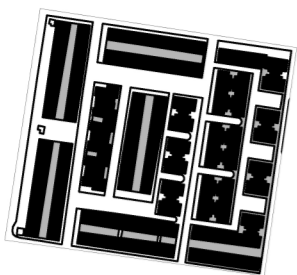
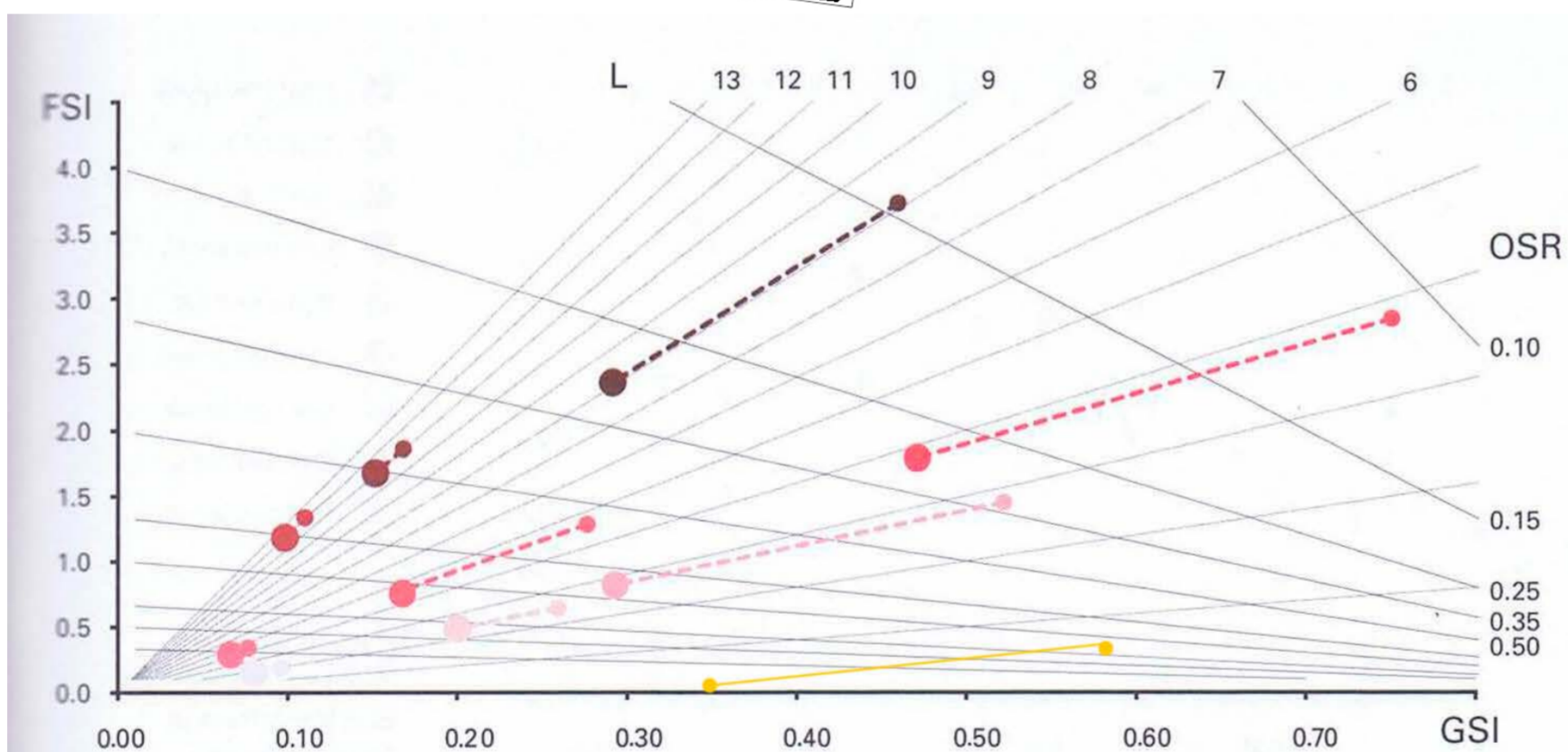


SANTA ADELA (ZAIDÍN, GRANADA)

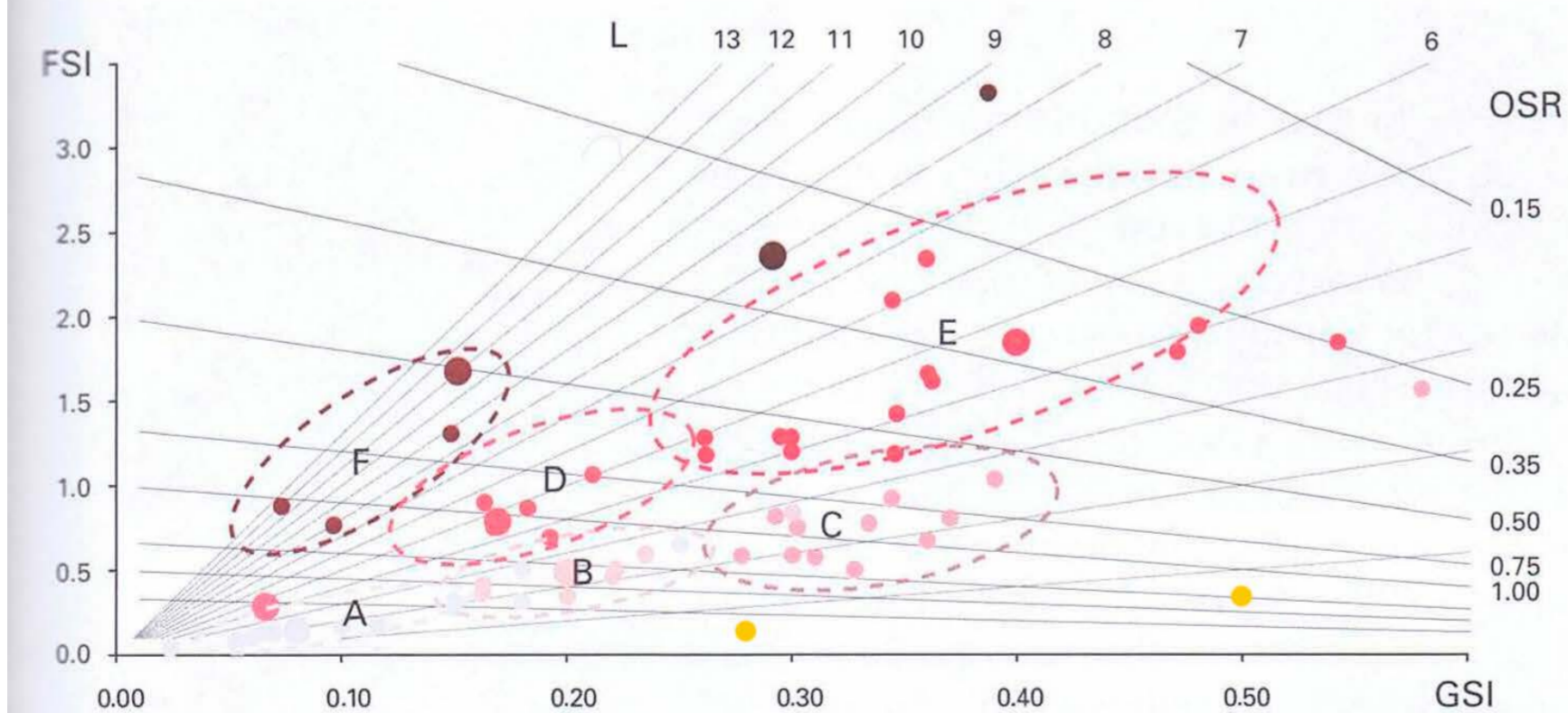


A: 25992 M²
FSI: 0.37 M²/M²
GSI: 0.58 M²/M²
OSR: 1.73 M²/M²
L: 4.6 PLANTAS (14.8 M)
N: 0.03 M
B: 5.9 M
W: 53 M
T: 26.4 %



- high-rise block
- high-rise strip
- high-rise point
- mid-rise block
- mid-rise strip
- mid-rise point
- low-rise block
- low-rise strip
- low-rise point

Nine archetypal samples in the Spacemate diagram on the scale of the island and the fabric.



- A low-rise point type
- B low-rise strip type
- C low-rise block type
- D mid-rise strip type
- E mid-rise block type
- F hybrid high-rise point/strip type

Building types in the Spacemate diagram on the scale of the fabric.

